



ELECTRONIC COPY

LG645454301
Report verification at igi.org



July 26, 2024
IGI Report Number: LG645454301
Description: LABORATORY GROWN DIAMOND
Shape and Cutting Style: ROUND BRILLIANT
Measurements: 7.92 - 7.98 X 5.05 MM
GRADING RESULTS
Carat Weight: 1.99 CARAT
Color Grade: E
Clarity Grade: VS 2
Cut Grade: EXCELLENT

LABORATORY GROWN DIAMOND REPORT

July 26, 2024
IGI Report Number: LG645454301
Description: LABORATORY GROWN DIAMOND
Shape and Cutting Style: ROUND BRILLIANT
Measurements: 7.92 - 7.98 X 5.05 MM

GRADING RESULTS

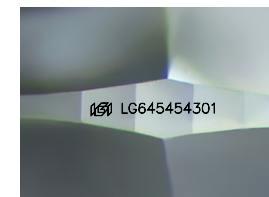
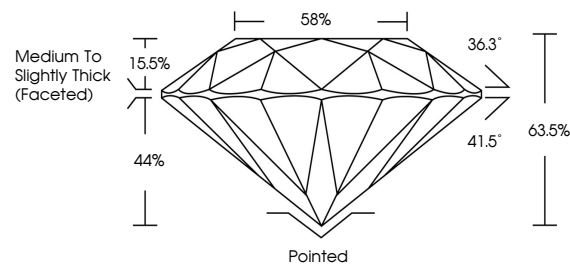
Carat Weight: 1.99 CARAT
Color Grade: E
Clarity Grade: VS 2
Cut Grade: EXCELLENT

ADDITIONAL GRADING INFORMATION

Polish: EXCELLENT
Symmetry: EXCELLENT
Fluorescence: NONE
Inscription(s): IGI LG645454301

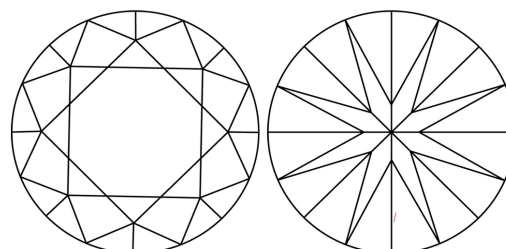
Comments: This Laboratory Grown Diamond was created by Chemical Vapor Deposition (CVD) growth process. Type IIa

PROPORTIONS



Sample Image Used

CLARITY CHARACTERISTICS



KEY TO SYMBOLS

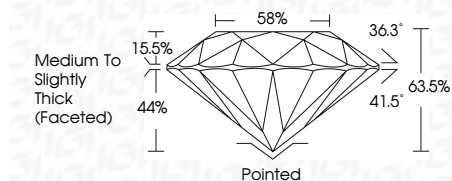
Red symbols indicate internal characteristics.
Green symbols indicate external characteristics.

COLOR

D E F G H I J Faint Very Light Light

CLARITY

IF VS 1-2 VS 1-2 SI 1-2 I 1-3
Internally Flawless Very Very Slightly Included Very Slightly Included Slightly Included Included



ADDITIONAL GRADING INFORMATION

Polish: EXCELLENT
Symmetry: EXCELLENT
Fluorescence: NONE
Inscription(s): IGI LG645454301
Comments: This Laboratory Grown Diamond was created by Chemical Vapor Deposition (CVD) growth process. Type IIa



July 26, 2024
IGI Report No. LG645454301
ROUND BRILLIANT
7.92 - 7.98 X 5.05 MM
1.99 CARAT
E
VS 2
EXCELLENT
63.5%
58%
Medium To Slightly Thick (Faceted)
Pointed
EXCELLENT
EXCELLENT
NONE
IGI LG645454301
Comments: This Laboratory Grown Diamond was created by Chemical Vapor Deposition (CVD) growth process. Type IIa