



**INTERNATIONAL
GEMOLOGICAL
INSTITUTE**

ELECTRONIC COPY

LG645456243

LABORATORY GROWN DIAMOND REPORT

July 24, 2024
 IGI Report Number **LG645456243**
 Description **LABORATORY GROWN DIAMOND**
 Shape and Cutting Style **ROUND BRILLIANT**
 Measurements **4.66 - 4.69 X 2.77 MM**

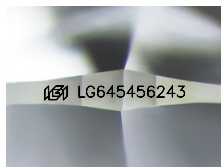
GRADING RESULTS

Carat Weight **0.37 CARAT**
 Color Grade **D**
 Clarity Grade **VS 1**
 Cut Grade **IDEAL**

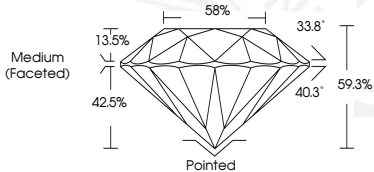
ADDITIONAL GRADING INFORMATION

Polish **EXCELLENT**
 Symmetry **VERY GOOD**
 Fluorescence **NONE**
 Inscription(s) **IGI LG645456243**

Comments: This Laboratory Grown Diamond was created by Chemical Vapor Deposition (CVD) growth process. Type IIa



Sample Image Used



July 24, 2024
 IGI Report Number **LG645456243**
ROUND BRILLIANT
LABORATORY GROWN DIAMOND
4.66 - 4.69 X 2.77 MM
 Carat Weight **0.37 CARAT**
 Color Grade **D**
 Clarity Grade **VS 1**
 Cut Grade **IDEAL**
 Polish **EXCELLENT**
 Symmetry **VERY GOOD**
 Fluorescence **NONE**
 Inscription(s) **IGI LG645456243**
 Comments: This Laboratory Grown Diamond was created by Chemical Vapor Deposition (CVD) growth process. Type IIa



July 24, 2024
 IGI Report Number **LG645456243**
ROUND BRILLIANT
LABORATORY GROWN DIAMOND
4.66 - 4.69 X 2.77 MM
 Carat Weight **0.37 CARAT**
 Color Grade **D**
 Clarity Grade **VS 1**
 Cut Grade **IDEAL**
 Polish **EXCELLENT**
 Symmetry **VERY GOOD**
 Fluorescence **NONE**
 Inscription(s) **IGI LG645456243**
 Comments: This Laboratory Grown Diamond was created by Chemical Vapor Deposition (CVD) growth process. Type IIa

THIS DOCUMENT WAS PRODUCED WITH THE FOLLOWING SECURITY MEASURES: SPECIAL DOCUMENT PAPER, INK SCREENS, WATERMARK, BACKGROUND DESIGN, HOLOGRAM AND OTHER SECURITY FEATURES NOT LISTED AND DO EXCEED DOCUMENT SECURITY INDUSTRY GUIDELINES.

For terms & conditions and to verify this report, please visit www.igi.org