



**INTERNATIONAL  
GEMOLOGICAL  
INSTITUTE**

**LABORATORY GROWN DIAMOND REPORT**

July 25, 2024  
 IGI Report Number **LG645457543**  
 Description **LABORATORY GROWN DIAMOND**  
 Shape and Cutting Style **ROUND BRILLIANT**  
 Measurements **6.06 - 6.16 X 3.66 MM**

**GRADING RESULTS**

Carat Weight **0.82 CARAT**  
 Color Grade **E**  
 Clarity Grade **VVS 2**  
 Cut Grade **IDEAL**

**ADDITIONAL GRADING INFORMATION**

Polish **EXCELLENT**  
 Symmetry **EXCELLENT**  
 Fluorescence **NONE**  
 Inscription(s) **IGI LG645457543**

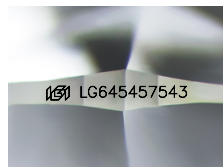
Comments: **HEARTS & ARROWS**  
 This Laboratory Grown Diamond was created by Chemical Vapor  
 Deposition (CVD) growth process.  
 Type Iia

**ELECTRONIC COPY**

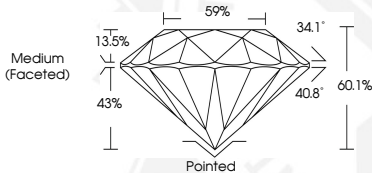
**LG645457543**



**HEARTS & ARROWS**



Sample Image Used



July 25, 2024  
 IGI Report Number **LG645457543**  
**ROUND BRILLIANT**  
**LABORATORY GROWN DIAMOND**  
**6.06 - 6.16 X 3.66 MM**  
 Carat Weight **0.82 CARAT**  
 Color Grade **E**  
 Clarity Grade **VVS 2**  
 Cut Grade **IDEAL**  
 Polish **EXCELLENT**  
 Symmetry **EXCELLENT**  
 Fluorescence **NONE**  
 Inscription(s) **IGI LG645457543**  
 Comments: **HEARTS & ARROWS** This  
 Laboratory Grown Diamond was  
 created by Chemical Vapor  
 Deposition (CVD) growth process.  
 Type Iia



July 25, 2024  
 IGI Report Number **LG645457543**  
**ROUND BRILLIANT**  
**LABORATORY GROWN DIAMOND**  
**6.06 - 6.16 X 3.66 MM**  
 Carat Weight **0.82 CARAT**  
 Color Grade **E**  
 Clarity Grade **VVS 2**  
 Cut Grade **IDEAL**  
 Polish **EXCELLENT**  
 Symmetry **EXCELLENT**  
 Fluorescence **NONE**  
 Inscription(s) **IGI LG645457543**  
 Comments: **HEARTS & ARROWS** This  
 Laboratory Grown Diamond was  
 created by Chemical Vapor  
 Deposition (CVD) growth process.  
 Type Iia

THIS DOCUMENT WAS PRODUCED WITH THE FOLLOWING SECURITY MEASURES: SPECIAL DOCUMENT PAPER, INK SCREENS, WATERMARK, BACKGROUND DESIGNS, HOLOGRAM AND OTHER SECURITY FEATURES NOT LISTED AND DO EXCEED DOCUMENT SECURITY INDUSTRY GUIDELINES.

For terms & conditions and to verify this report, please visit [www.igi.org](http://www.igi.org)