



**ELECTRONIC COPY**

LG645458545  
Report verification at igi.org



July 25, 2024

IGI Report Number **LG645458545**

Description **LABORATORY GROWN DIAMOND**

Shape and Cutting Style **EMERALD CUT**

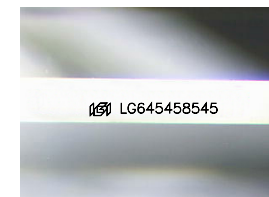
Measurements **8.87 X 5.98 X 3.85 MM**

**GRADING RESULTS**

Carat Weight **2.00 CARATS**

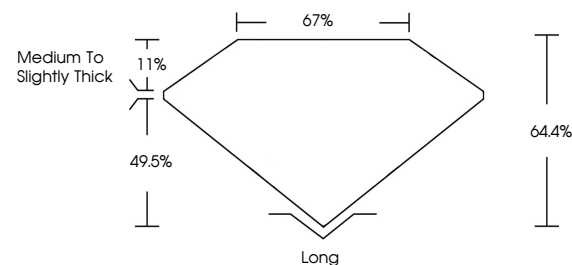
Color Grade **E**

Clarity Grade **VS 1**

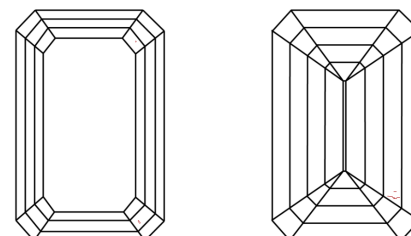


Sample Image Used

**PROPORTIONS**



**CLARITY CHARACTERISTICS**



**KEY TO SYMBOLS**

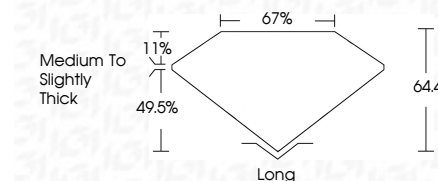
Red symbols indicate internal characteristics.  
Green symbols indicate external characteristics.

**COLOR**

D E F G H I J Faint Very Light Light

**CLARITY**

IF	VS <sup>1-2</sup>	VS <sup>1-2</sup>	SI <sup>1-2</sup>	I <sup>1-3</sup>
Internally Flawless	Very Very Slightly Included	Very Slightly Included	Slightly Included	Included



**ADDITIONAL GRADING INFORMATION**

Polish **EXCELLENT**

Symmetry **VERY GOOD**

Fluorescence **NONE**

Inscription(s) **IGI LG645458545**

Comments: This Laboratory Grown Diamond was created by Chemical Vapor Deposition (CVD) growth process.  
Type IIa



**IGI**



July 25, 2024  
IGI Report No. LG645458545  
**EMERALD CUT**  
8.87 X 5.98 X 3.85 MM  
2.00 CARATS  
E  
Color Grade  
VS 1  
Clarity Grade  
64.4%  
0.7%  
Medium to Slightly Thick  
Long  
Culet  
EXCELLENT  
Polish  
VERY GOOD  
Symmetry  
NONE  
Fluorescence  
IGI LG645458545  
Inscription(s)  
Comments: This Laboratory Grown Diamond was created by Chemical Vapor Deposition (CVD) growth process.  
Type IIa