



Light Performance Grade: Exceptional



Ideal-Scope representation

Low Moderate High Superior Exceptional

Light Performance



COLOR

D E F G H I J Faint Very Light Light

CLARITY

IF VS 1-2 VS 1-2 SI 1-2 I 1-3  
Internally Flawless Very Very Slightly Included Very Slightly Included Slightly Included Included

ELECTRONIC COPY

LABORATORY GROWN DIAMOND REPORT

July 24, 2024  
IGI Report Number LG645459754  
Description LABORATORY GROWN DIAMOND  
Shape and Cutting Style ROUND BRILLIANT  
Measurements 7.66 - 7.70 x 4.69 mm

GRADING RESULTS

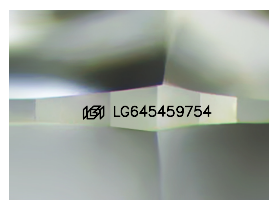
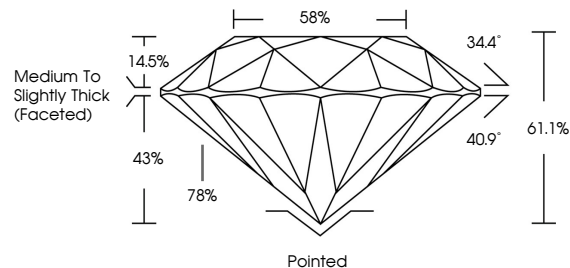
Carat Weight 1.69 CARAT  
Color Grade D  
Clarity Grade VVS 2  
Cut Grade IDEAL

ADDITIONAL GRADING INFORMATION

Polish EXCELLENT  
Symmetry EXCELLENT  
Fluorescence NONE  
Inscription(s) IGI LG645459754

Comments: HEARTS & ARROWS  
This Laboratory Grown Diamond was created by Chemical Vapor Deposition (CVD) growth process. Type IIa

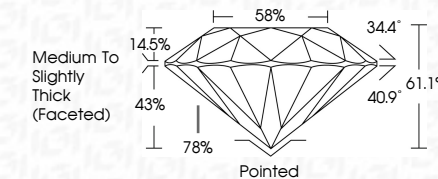
PROPORTIONS



Sample Image Used



July 24, 2024  
IGI Report Number LG645459754  
Description LABORATORY GROWN DIAMOND  
Shape and Cutting Style ROUND BRILLIANT  
Measurements 7.66 - 7.70 X 4.69 MM  
GRADING RESULTS  
Carat Weight 1.69 CARAT  
Color Grade D  
Clarity Grade VVS 2  
Cut Grade IDEAL



ADDITIONAL GRADING INFORMATION  
Polish EXCELLENT  
Symmetry EXCELLENT  
Fluorescence NONE  
Inscription(s) IGI LG645459754  
Comments: HEARTS & ARROWS  
This Laboratory Grown Diamond was created by Chemical Vapor Deposition (CVD) growth process. Type IIa



IGI



July 24, 2024  
IGI Report No LG645459754  
ROUND BRILLIANT  
7.66 - 7.70 X 4.69 MM  
Carat Weight 1.69 CARAT  
Color Grade D  
Clarity Grade VVS 2  
Cut Grade IDEAL  
Depth 61.1%  
Table 58%  
Girdle Medium To Slightly Thick (Faceted)  
Culet Pointed  
Polish EXCELLENT  
Symmetry EXCELLENT  
Fluorescence NONE  
Inscription(s) IGI LG645459754  
Comments: HEARTS & ARROWS  
This Laboratory Grown Diamond was created by Chemical Vapor Deposition (CVD) growth process. Type IIa