

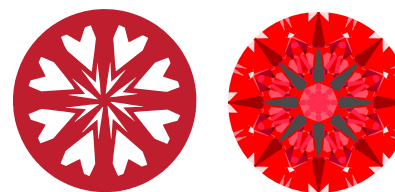


**INTERNATIONAL
GEMOLOGICAL
INSTITUTE**

LG645459763
Report verification at igi.org

LIGHT PERFORMANCE REPORT

Light Performance Grade: **Exceptional**



Ideal-Scope representation

Low Moderate High Superior Exceptional

Light Performance



COLOR

D E F G H I J Faint Very Light Light

CLARITY

IF	VS ¹⁻²	VS ¹⁻²	SI ¹⁻²	I ¹⁻³
Internally Flawless	Very Very Slightly Included	Very Slightly Included	Slightly Included	Included

ELECTRONIC COPY

LABORATORY GROWN DIAMOND REPORT

July 24, 2024
IGI Report Number **LG645459763**
Description **LABORATORY GROWN DIAMOND**
Shape and Cutting Style **ROUND BRILLIANT**
Measurements **6.73 - 6.77 x 4.07 mm**

GRADING RESULTS

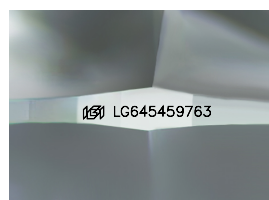
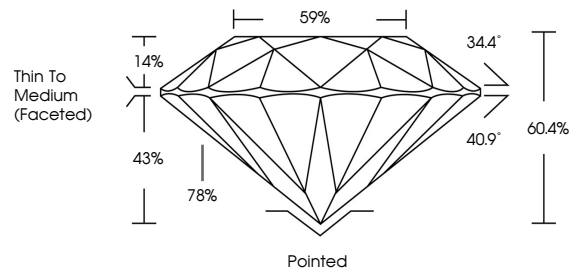
Carat Weight **1.13 CARAT**
Color Grade **D**
Clarity Grade **VS 1**
Cut Grade **IDEAL**

ADDITIONAL GRADING INFORMATION

Polish **EXCELLENT**
Symmetry **EXCELLENT**
Fluorescence **NONE**
Inscription(s) **IGI LG645459763**

Comments: HEARTS & ARROWS
This Laboratory Grown Diamond was created by Chemical Vapor Deposition (CVD) growth process. Type IIa

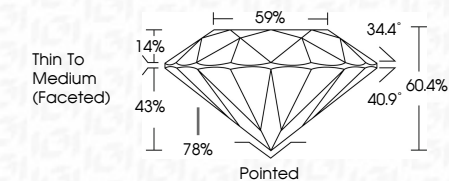
PROPORTIONS



Sample Image Used



July 24, 2024
IGI Report Number **LG645459763**
Description **LABORATORY GROWN DIAMOND**
Shape and Cutting Style **ROUND BRILLIANT**
Measurements **6.73 - 6.77 X 4.07 MM**
GRADING RESULTS
Carat Weight **1.13 CARAT**
Color Grade **D**
Clarity Grade **VS 1**
Cut Grade **IDEAL**



ADDITIONAL GRADING INFORMATION

Polish **EXCELLENT**
Symmetry **EXCELLENT**
Fluorescence **NONE**
Inscription(s) **IGI LG645459763**
Comments: HEARTS & ARROWS
This Laboratory Grown Diamond was created by Chemical Vapor Deposition (CVD) growth process. Type IIa



IGI

July 24, 2024
IGI Report No **LG645459763**
ROUND BRILLIANT
6.73 - 6.77 X 4.07 MM
Carat Weight **1.13 CARAT**
Color Grade **D**
Clarity Grade **VS 1**
Cut Grade **IDEAL**
Depth **60.4%**
Table **59%**
Girdle **Thin To Medium (Faceted)**
Culet **Pointed**
Polish **EXCELLENT**
Symmetry **EXCELLENT**
Fluorescence **NONE**
Inscription(s) **IGI LG645459763**
Comments: HEARTS & ARROWS
This Laboratory Grown Diamond was created by Chemical Vapor Deposition (CVD) growth process. Type IIa