



ELECTRONIC COPY

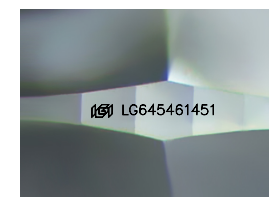
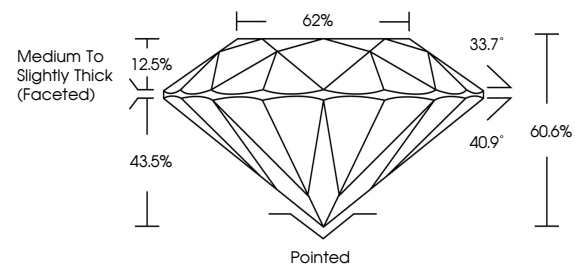
LG645461451
Report verification at igi.org



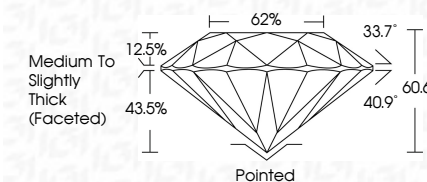
August 5, 2024
IGI Report Number LG645461451
Description LABORATORY GROWN DIAMOND
Shape and Cutting Style ROUND BRILLIANT
Measurements 8.06 - 8.11 X 4.90 MM
GRADING RESULTS
Carat Weight 2.00 CARATS
Color Grade F
Clarity Grade VS 1
Cut Grade EXCELLENT

August 5, 2024
IGI Report Number LG645461451
Description LABORATORY GROWN DIAMOND
Shape and Cutting Style ROUND BRILLIANT
Measurements 8.06 - 8.11 X 4.90 MM
GRADING RESULTS
Carat Weight 2.00 CARATS
Color Grade F
Clarity Grade VS 1
Cut Grade EXCELLENT

PROPORTIONS



Sample Image Used



ADDITIONAL GRADING INFORMATION

Polish EXCELLENT
Symmetry EXCELLENT
Fluorescence NONE
Inscription(s) IGI LG645461451

ADDITIONAL GRADING INFORMATION

Polish EXCELLENT
Symmetry EXCELLENT
Fluorescence NONE
Inscription(s) IGI LG645461451
Comments: This Laboratory Grown Diamond was created by Chemical Vapor Deposition (CVD) growth process. Type IIa

COLOR

D E F G H I J Faint Very Light Light

CLARITY

IF VS 1-2 VS 1-2 SI 1-2 I 1-3
Internally Flawless Very Very Slightly Included Very Slightly Included Slightly Included Included



IGI

August 5, 2024
IGI Report No LG645461451
ROUND BRILLIANT
8.06 - 8.11 X 4.90 MM
2.00 CARATS
Color Grade F
Clarity Grade VS 1
Depth 60.6%
Table 62%
Medium To Slightly Thick (Faceted)
Cutler Pointed
Polish EXCELLENT
Symmetry EXCELLENT
Fluorescence NONE
Inscriptions(s) IGI LG645461451
Comments: This Laboratory Grown Diamond was created by Chemical Vapor Deposition (CVD) growth process. Type IIa