



**INTERNATIONAL
GEMOLOGICAL
INSTITUTE**

ELECTRONIC COPY

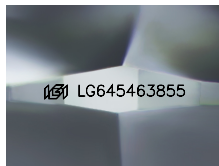
LG645463855



July 30, 2024
IGI Report Number **LG645463855**
ROUND BRILLIANT
LABORATORY GROWN DIAMOND
4.63 - 4.68 X 2.90 MM
Carat Weight **0.39 CARAT**
Color Grade **E**
Clarity Grade **VVS 2**
Cut Grade **VERY GOOD**
Polish **VERY GOOD**
Symmetry **VERY GOOD**
Fluorescence **NONE**
Inscription(s) **IGI LG645463855**

LABORATORY GROWN DIAMOND REPORT

July 30, 2024
IGI Report Number **LG645463855**
Description **LABORATORY GROWN DIAMOND**
Shape and Cutting Style **ROUND BRILLIANT**
Measurements **4.63 - 4.68 X 2.90 MM**



Sample Image Used

Comments: This Laboratory Grown Diamond was created by Chemical Vapor Deposition (CVD) growth process. Type IIa

GRADING RESULTS

Carat Weight **0.39 CARAT**
Color Grade **E**
Clarity Grade **VVS 2**
Cut Grade **VERY GOOD**

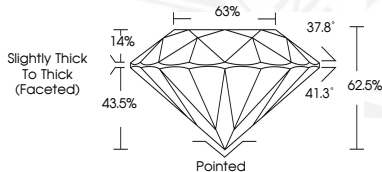
ADDITIONAL GRADING INFORMATION

Polish **VERY GOOD**
Symmetry **VERY GOOD**
Fluorescence **NONE**
Inscription(s) **IGI LG645463855**

Comments: This Laboratory Grown Diamond was created by Chemical Vapor Deposition (CVD) growth process. Type IIa



July 30, 2024
IGI Report Number **LG645463855**
ROUND BRILLIANT
LABORATORY GROWN DIAMOND
4.63 - 4.68 X 2.90 MM
Carat Weight **0.39 CARAT**
Color Grade **E**
Clarity Grade **VVS 2**
Cut Grade **VERY GOOD**
Polish **VERY GOOD**
Symmetry **VERY GOOD**
Fluorescence **NONE**
Inscription(s) **IGI LG645463855**



Comments: This Laboratory Grown Diamond was created by Chemical Vapor Deposition (CVD) growth process. Type IIa

THIS DOCUMENT WAS PRODUCED WITH THE FOLLOWING SECURITY MEASURES: SPECIAL DOCUMENT PAPER, INK SCREENS, WATERMARK, BACKGROUND DESIGN, HOLOGRAM AND OTHER SECURITY FEATURES NOT LISTED AND DO EXCEED DOCUMENT SECURITY INDUSTRY GUIDELINES.

For terms & conditions and to verify this report, please visit www.igi.org