



ELECTRONIC COPY

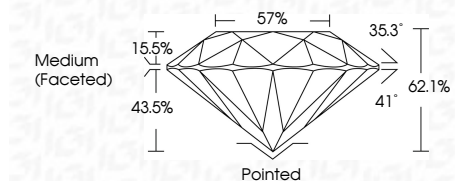
LG645464138
Report verification at igi.org



July 29, 2024
IGI Report Number LG645464138
Description LABORATORY GROWN DIAMOND
Shape and Cutting Style ROUND BRILLIANT
Measurements 7.23 - 7.26 X 4.50 MM

GRADING RESULTS

Carat Weight 1.44 CARAT
Color Grade H
Clarity Grade VVS 2
Cut Grade IDEAL

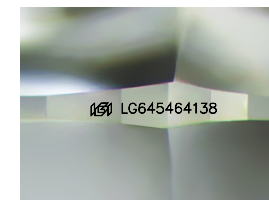


ADDITIONAL GRADING INFORMATION

Polish EXCELLENT
Symmetry EXCELLENT
Fluorescence NONE
Inscription(s) IGI LG645464138
Comments: This Laboratory Grown Diamond was created by Chemical Vapor Deposition (CVD) growth process. Type IIa

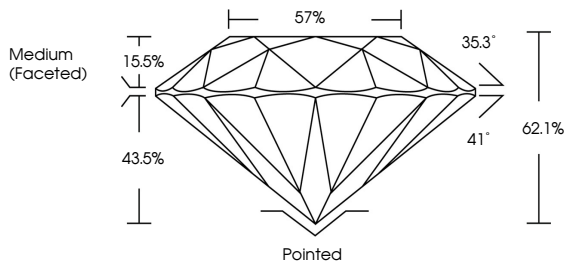


July 29, 2024
IGI Report No LG645464138
ROUND BRILLIANT
7.23 - 7.26 X 4.50 MM
1.44 CARAT H
VVS 2 IDEAL
62.1% 57%
Medium (Faceted)
Pointed EXCELLENT EXCELLENT NONE
None IGI LG645464138
Comments: This Laboratory Grown Diamond was created by Chemical Vapor Deposition (CVD) growth process. Type IIa

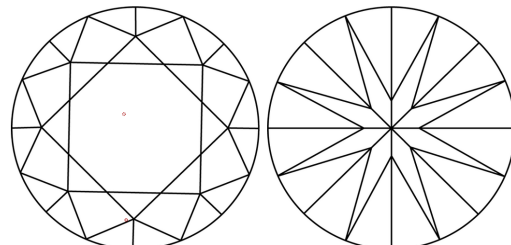


Sample Image Used

PROPORTIONS



CLARITY CHARACTERISTICS



KEY TO SYMBOLS

Red symbols indicate internal characteristics.
Green symbols indicate external characteristics.

COLOR

D E F G H I J Faint Very Light Light

CLARITY

IF VVS 1-2 VS 1-2 SI 1-2 I 1-3
Internally Flawless Very Very Slightly Included Very Slightly Included Slightly Included Included

