



**INTERNATIONAL  
GEMOLOGICAL  
INSTITUTE**

**ELECTRONIC COPY**

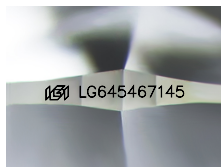
**LG645467145**



July 29, 2024  
**IGI Report Number** LG645467145  
**ROUND BRILLIANT**  
**LABORATORY GROWN DIAMOND**  
**5.25 - 5.30 X 3.28 MM**  
 Carat Weight **0.57 CARAT**  
 Color Grade **D**  
 Clarity Grade **VVS 1**  
 Cut Grade **EXCELLENT**  
 Polish **EXCELLENT**  
 Symmetry **EXCELLENT**  
 Fluorescence **NONE**  
 Inscription(s) **IGI LG645467145**  
 Comments: This Laboratory Grown Diamond was created by Chemical Vapor Deposition (CVD) growth process. Type IIa

**LABORATORY GROWN DIAMOND REPORT**

July 29, 2024  
 IGI Report Number **LG645467145**  
 Description **LABORATORY GROWN DIAMOND**  
 Shape and Cutting Style **ROUND BRILLIANT**  
 Measurements **5.25 - 5.30 X 3.28 MM**



Sample Image Used

**GRADING RESULTS**

Carat Weight **0.57 CARAT**  
 Color Grade **D**  
 Clarity Grade **VVS 1**  
 Cut Grade **EXCELLENT**

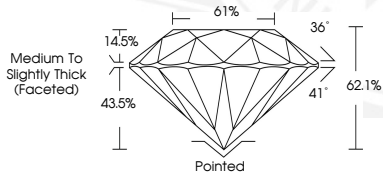
**ADDITIONAL GRADING INFORMATION**

Polish **EXCELLENT**  
 Symmetry **EXCELLENT**  
 Fluorescence **NONE**  
 Inscription(s) **IGI LG645467145**

Comments: This Laboratory Grown Diamond was created by Chemical Vapor Deposition (CVD) growth process. Type IIa



July 29, 2024  
**IGI Report Number** LG645467145  
**ROUND BRILLIANT**  
**LABORATORY GROWN DIAMOND**  
**5.25 - 5.30 X 3.28 MM**  
 Carat Weight **0.57 CARAT**  
 Color Grade **D**  
 Clarity Grade **VVS 1**  
 Cut Grade **EXCELLENT**  
 Polish **EXCELLENT**  
 Symmetry **EXCELLENT**  
 Fluorescence **NONE**  
 Inscription(s) **IGI LG645467145**  
 Comments: This Laboratory Grown Diamond was created by Chemical Vapor Deposition (CVD) growth process. Type IIa



THIS DOCUMENT WAS PRODUCED WITH THE FOLLOWING SECURITY MEASURES: SPECIAL DOCUMENT PAPER, INK SCREENS, WATERMARK, BACKGROUND DESIGN, HOLOGRAM AND OTHER SECURITY FEATURES NOT LISTED AND DO EXCEED DOCUMENT SECURITY INDUSTRY GUIDELINES.

For terms & conditions and to verify this report, please visit [www.igi.org](http://www.igi.org)