



**ELECTRONIC COPY**

LG645467636  
Report verification at igi.org



July 31, 2024  
IGI Report Number **LG645467636**  
Description **LABORATORY GROWN DIAMOND**  
Shape and Cutting Style **CUSHION MODIFIED BRILLIANT**  
Measurements **10.72 X 8.99 X 5.90 MM**  
**GRADING RESULTS**  
Carat Weight **4.34 CARATS**  
Color Grade **H**  
Clarity Grade **VS 1**

**LABORATORY GROWN DIAMOND REPORT**

July 31, 2024  
IGI Report Number **LG645467636**  
Description **LABORATORY GROWN DIAMOND**  
Shape and Cutting Style **CUSHION MODIFIED BRILLIANT**  
Measurements **10.72 X 8.99 X 5.90 MM**

**GRADING RESULTS**

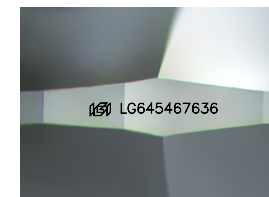
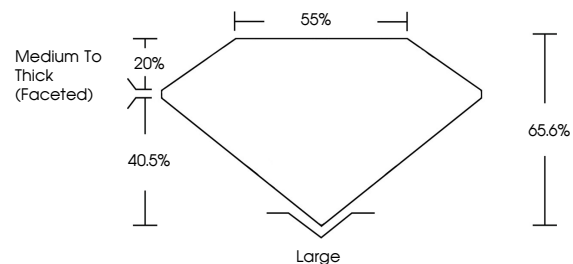
Carat Weight **4.34 CARATS**  
Color Grade **H**  
Clarity Grade **VS 1**

**ADDITIONAL GRADING INFORMATION**

Polish **EXCELLENT**  
Symmetry **EXCELLENT**  
Fluorescence **NONE**  
Inscription(s) **IGI LG645467636**

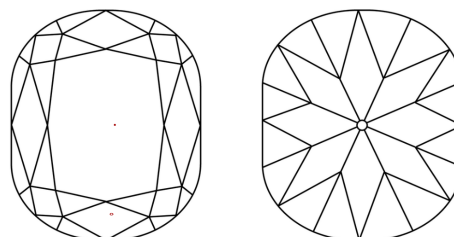
Comments: This Laboratory Grown Diamond was created by Chemical Vapor Deposition (CVD) growth process. Type IIa

**PROPORTIONS**



Sample Image Used

**CLARITY CHARACTERISTICS**



**KEY TO SYMBOLS**

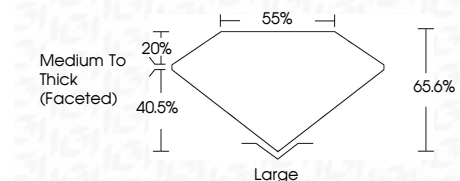
Red symbols indicate internal characteristics.  
Green symbols indicate external characteristics.

**COLOR**

D E F G H I J Faint Very Light Light

**CLARITY**

IF	VS <sup>1-2</sup>	VS <sup>1-2</sup>	SI <sup>1-2</sup>	I <sup>1-3</sup>
Internally Flawless	Very Very Slightly Included	Very Slightly Included	Slightly Included	Included



**ADDITIONAL GRADING INFORMATION**

Polish **EXCELLENT**  
Symmetry **EXCELLENT**  
Fluorescence **NONE**  
Inscription(s) **IGI LG645467636**  
Comments: This Laboratory Grown Diamond was created by Chemical Vapor Deposition (CVD) growth process. Type IIa



July 31, 2024  
IGI Report No **LG645467636**  
**CUSHION MODIFIED BRILLIANT**  
**10.72 X 8.99 X 5.90 MM**  
Carat Weight **4.34 CARATS**  
Color Grade **H**  
Clarity Grade **VS 1**  
Depth **65.6%**  
Table **55%**  
Girdle **Medium To Thick (Faceted)**  
Culet **Large**  
Polish **EXCELLENT**  
Symmetry **EXCELLENT**  
Fluorescence **NONE**  
Inscription(s) **IGI LG645467636**  
Comments: This Laboratory Grown Diamond was created by Chemical Vapor Deposition (CVD) growth process. Type IIa