



ELECTRONIC COPY

LG645467982
Report verification at igi.org



July 26, 2024
IGI Report Number: LG645467982
Description: LABORATORY GROWN DIAMOND
Shape and Cutting Style: ROUND BRILLIANT
Measurements: 7.41 - 7.46 X 4.44 MM
GRADING RESULTS
Carat Weight: 1.50 CARAT
Color Grade: E
Clarity Grade: VS 1
Cut Grade: IDEAL

LABORATORY GROWN DIAMOND REPORT

July 26, 2024
IGI Report Number: LG645467982
Description: LABORATORY GROWN DIAMOND
Shape and Cutting Style: ROUND BRILLIANT
Measurements: 7.41 - 7.46 X 4.44 MM

GRADING RESULTS

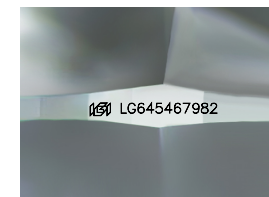
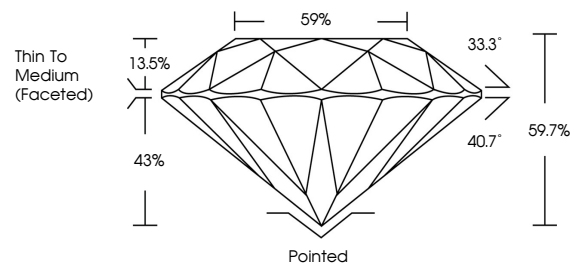
Carat Weight: 1.50 CARAT
Color Grade: E
Clarity Grade: VS 1
Cut Grade: IDEAL

ADDITIONAL GRADING INFORMATION

Polish: EXCELLENT
Symmetry: EXCELLENT
Fluorescence: NONE
Inscription(s): IGI LG645467982

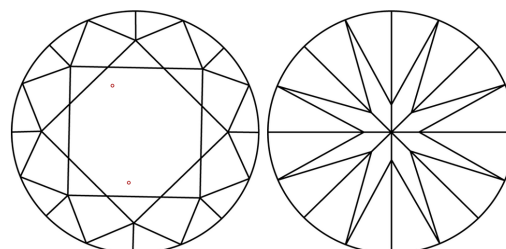
Comments: This Laboratory Grown Diamond was created by Chemical Vapor Deposition (CVD) growth process. Type IIa

PROPORTIONS



Sample Image Used

CLARITY CHARACTERISTICS



KEY TO SYMBOLS

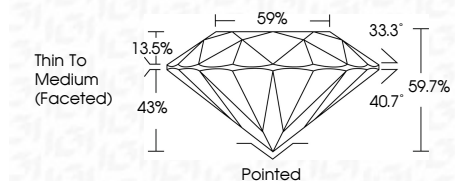
Red symbols indicate internal characteristics.
Green symbols indicate external characteristics.

COLOR

D E F G H I J Faint Very Light Light

CLARITY

IF VS 1-2 VS 1-2 SI 1-2 I 1-3
Internally Flawless Very Very Slightly Included Very Slightly Included Slightly Included Included



ADDITIONAL GRADING INFORMATION

Polish: EXCELLENT
Symmetry: EXCELLENT
Fluorescence: NONE
Inscription(s): IGI LG645467982
Comments: This Laboratory Grown Diamond was created by Chemical Vapor Deposition (CVD) growth process. Type IIa



July 26, 2024
IGI Report No. LG645467982
ROUND BRILLIANT
7.41 - 7.46 X 4.44 MM
1.50 CARAT
E
VS 1
IDEAL
59.7%
59%
Thin To Medium (Faceted)
Pointed
EXCELLENT
EXCELLENT
NONE
IGI LG645467982
Comments: This Laboratory Grown Diamond was created by Chemical Vapor Deposition (CVD) growth process. Type IIa