



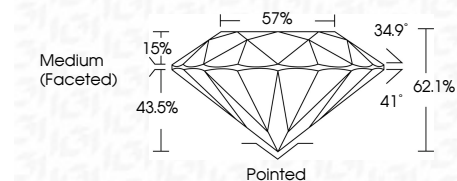
ELECTRONIC COPY

LG645468521 Report verification at igi.org



July 25, 2024 IGI Report Number LG645468521 Description LABORATORY GROWN DIAMOND Shape and Cutting Style ROUND BRILLIANT Measurements 9.56 - 9.59 X 5.95 MM

GRADING RESULTS Carat Weight 3.37 CARATS Color Grade D Clarity Grade VVS 1 Cut Grade IDEAL

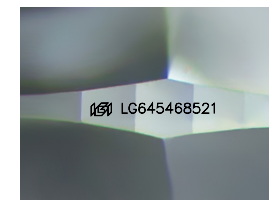


ADDITIONAL GRADING INFORMATION Polish EXCELLENT Symmetry EXCELLENT Fluorescence NONE Inscription(s) LG645468521 Comments: HEARTS & ARROWS As Grown - No indication of post-growth treatment. This Laboratory Grown Diamond was created by High Pressure High Temperature (HPHT) growth process. Type II



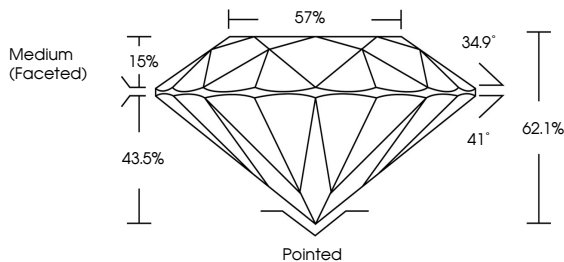
July 25, 2024 IGI Report No LG645468521 ROUND BRILLIANT 9.56 - 9.59 X 5.95 MM 3.37 CARATS D Color Grade VVS 1 IDEAL 62.1% 57% Medium (Faceted) Pointed EXCELLENT EXCELLENT NONE NONE LG645468521

Comments: HEARTS & ARROWS As Grown - No indication of post-growth treatment. This Laboratory Grown Diamond was created by High Pressure High Temperature (HPHT) growth process. Type II

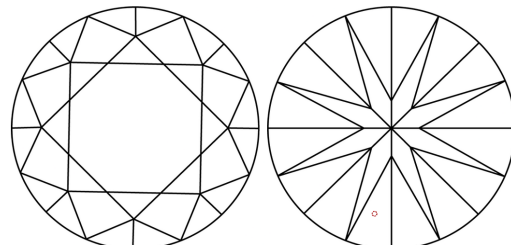


Sample Image Used

PROPORTIONS



CLARITY CHARACTERISTICS



KEY TO SYMBOLS

Red symbols indicate internal characteristics. Green symbols indicate external characteristics.



COLOR

D E F G H I J Faint Very Light Light

CLARITY

IF VVS 1-2 VS 1-2 SI 1-2 I 1-3 Internally Flawless Very Very Slightly Included Very Slightly Included Slightly Included Included



July 25, 2024 IGI Report Number LG645468521 Description LABORATORY GROWN DIAMOND Shape and Cutting Style ROUND BRILLIANT Measurements 9.56 - 9.59 X 5.95 MM

GRADING RESULTS Carat Weight 3.37 CARATS Color Grade D Clarity Grade VVS 1 Cut Grade IDEAL

ADDITIONAL GRADING INFORMATION Polish EXCELLENT Symmetry EXCELLENT Fluorescence NONE Inscription(s) LG645468521

Comments: HEARTS & ARROWS As Grown - No indication of post-growth treatment. This Laboratory Grown Diamond was created by High Pressure High Temperature (HPHT) growth process. Type II