



**INTERNATIONAL  
GEMOLOGICAL  
INSTITUTE**

**ELECTRONIC COPY**

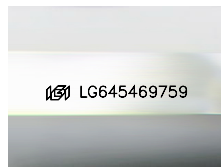
**LG645469759**



July 30, 2024  
**IGI Report Number LG645469759**  
**PRINCESS CUT**  
**LABORATORY GROWN DIAMOND**  
**4.93 X 4.88 X 3.73 MM**  
 Carat Weight **0.79 CARAT**  
 Color Grade **D**  
 Clarity Grade **VVS 2**  
 Polish **EXCELLENT**  
 Symmetry **EXCELLENT**  
 Fluorescence **NONE**  
 Inscription(s) **IGI LG645469759**

**LABORATORY GROWN DIAMOND REPORT**

July 30, 2024  
 IGI Report Number **LG645469759**  
 Description **LABORATORY GROWN DIAMOND**  
 Shape and Cutting Style **PRINCESS CUT**  
 Measurements **4.93 X 4.88 X 3.73 MM**



Sample Image Used

Comments: As Grown - No indication of post-growth treatment. This Laboratory Grown Diamond was created by High Pressure High Temperature (HPHT) growth process. Type II

**GRADING RESULTS**

Carat Weight **0.79 CARAT**  
 Color Grade **D**  
 Clarity Grade **VVS 2**

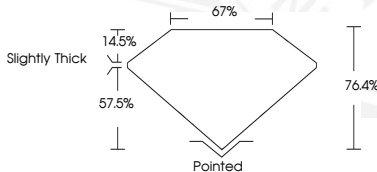
**ADDITIONAL GRADING INFORMATION**

Polish **EXCELLENT**  
 Symmetry **EXCELLENT**  
 Fluorescence **NONE**  
 Inscription(s) **IGI LG645469759**

Comments: As Grown - No indication of post-growth treatment. This Laboratory Grown Diamond was created by High Pressure High Temperature (HPHT) growth process. Type II



July 30, 2024  
**IGI Report Number LG645469759**  
**PRINCESS CUT**  
**LABORATORY GROWN DIAMOND**  
**4.93 X 4.88 X 3.73 MM**  
 Carat Weight **0.79 CARAT**  
 Color Grade **D**  
 Clarity Grade **VVS 2**  
 Polish **EXCELLENT**  
 Symmetry **EXCELLENT**  
 Fluorescence **NONE**  
 Inscription(s) **IGI LG645469759**



THIS DOCUMENT WAS PRODUCED WITH THE FOLLOWING SECURITY MEASURES: SPECIAL DOCUMENT PAPER, INK SCREENS, WATERMARK, BACKGROUND DESIGN, HOLOGRAM AND OTHER SECURITY FEATURES NOT LISTED AND DO EXCEED DOCUMENT SECURITY INDUSTRY GUIDELINES.

For terms & conditions and to verify this report, please visit [www.igi.org](http://www.igi.org)