



ELECTRONIC COPY

LG645470183
Report verification at igi.org



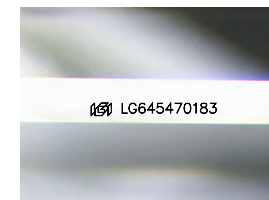
July 30, 2024
IGI Report Number **LG645470183**
Description **LABORATORY GROWN DIAMOND**

Shape and Cutting Style **CUT CORNERED
RECTANGULAR MODIFIED
BRILLIANT**

Measurements **12.78 X 8.54 X 5.48 MM**

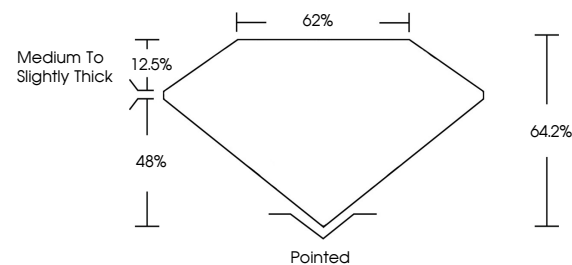
GRADING RESULTS

Carat Weight **5.41 CARATS**
Color Grade **E**
Clarity Grade **VS 2**
Cut Grade **EXCELLENT**

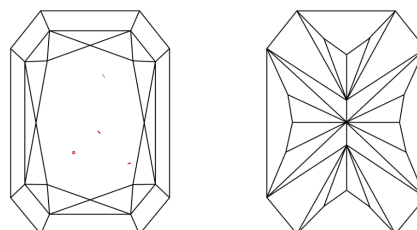


Sample Image Used

PROPORTIONS



CLARITY CHARACTERISTICS



KEY TO SYMBOLS

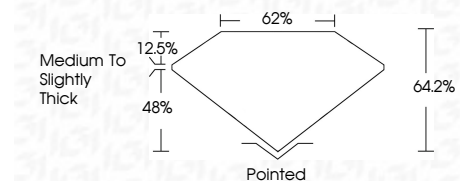
Red symbols indicate internal characteristics.
Green symbols indicate external characteristics.

COLOR

D E F G H I J Faint Very Light Light

CLARITY

IF	VS ¹⁻²	VS ¹⁻²	SI ¹⁻²	I ¹⁻³
Internally Flawless	Very Very Slightly Included	Very Slightly Included	Slightly Included	Included



ADDITIONAL GRADING INFORMATION

Polish **EXCELLENT**
Symmetry **EXCELLENT**
Fluorescence **NONE**
Inscription(s) **IGI LG645470183**
Comments: This Laboratory Grown Diamond was created by Chemical Vapor Deposition (CVD) growth process. Type IIa



IGI



July 30, 2024
IGI Report No LG645470183
CUT CORNERED RECT. MODIFIED BRILLIANT
12.78 X 8.54 X 5.48 MM
5.41 CARATS
E
VS 2
EXCELLENT
62%
64.2%
Medium To Slightly Thick
Pointed
EXCELLENT
EXCELLENT
NONE
IGI LG645470183
Comments: This Laboratory Grown Diamond was created by Chemical Vapor Deposition (CVD) growth process. Type IIa