



ELECTRONIC COPY

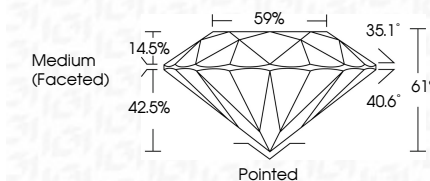
LG645471034 Report verification at igi.org



August 7, 2024 IGI Report Number LG645471034 Description LABORATORY GROWN DIAMOND Shape and Cutting Style ROUND BRILLIANT Measurements 7.48 - 7.54 X 4.58 MM

GRADING RESULTS

Carat Weight 1.59 CARAT Color Grade E Clarity Grade VS 1 Cut Grade IDEAL



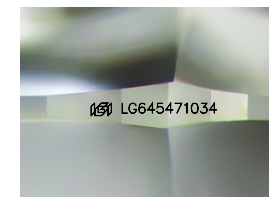
ADDITIONAL GRADING INFORMATION

Polish EXCELLENT Symmetry EXCELLENT Fluorescence NONE Inscription(s) LG645471034 Comments: This Laboratory Grown Diamond was created by Chemical Vapor Deposition (CVD) growth process. Type IIa



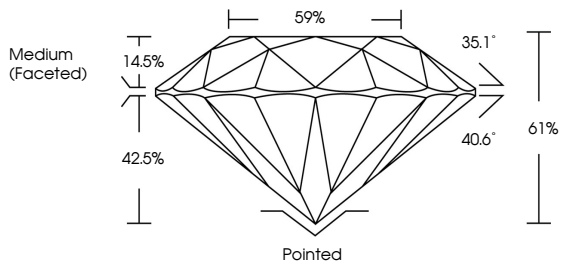
August 7, 2024 IGI Report No LG645471034 ROUND BRILLIANT 7.48 - 7.54 X 4.58 MM 1.59 CARAT E VS 1 IDEAL 61% 59% Medium (Faceted) Pointed EXCELLENT EXCELLENT NONE NONE LG645471034

Comments: This Laboratory Grown Diamond was created by Chemical Vapor Deposition (CVD) growth process. Type IIa

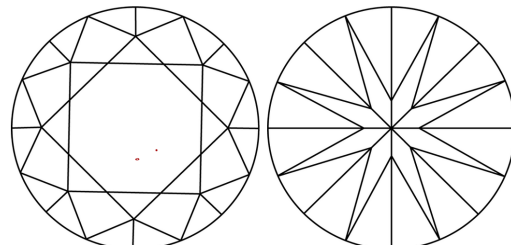


Sample Image Used

PROPORTIONS



CLARITY CHARACTERISTICS



KEY TO SYMBOLS

Red symbols indicate internal characteristics. Green symbols indicate external characteristics.

COLOR

D E F G H I J Faint Very Light Light

CLARITY

IF VS 1-2 VS 1-2 SI 1-2 I 1-3 Internally Flawless Very Very Slightly Included Very Slightly Included Slightly Included Included

