



ELECTRONIC COPY

LG645471475
Report verification at igi.org



July 29, 2024

IGI Report Number **LG645471475**

Description **LABORATORY GROWN DIAMOND**

Shape and Cutting Style **CUT CORNERED
RECTANGULAR MODIFIED
BRILLIANT**

Measurements **9.33 X 6.57 X 4.18 MM**

GRADING RESULTS

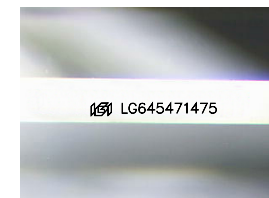
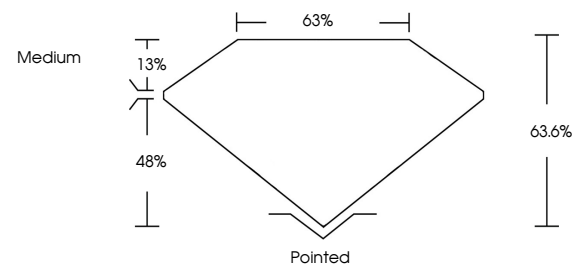
Carat Weight **2.22 CARATS**

Color Grade **E**

Clarity Grade **VVS 2**

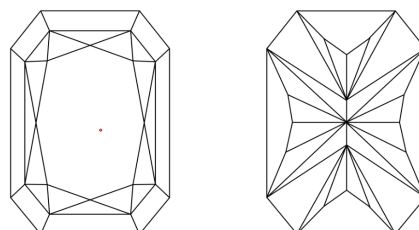
Cut Grade **EXCELLENT**

PROPORTIONS



Sample Image Used

CLARITY CHARACTERISTICS



KEY TO SYMBOLS

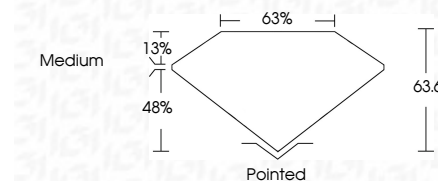
Red symbols indicate internal characteristics.
Green symbols indicate external characteristics.

COLOR

D E F G H I J Faint Very Light Light

CLARITY

IF	VS ¹⁻²	VS ¹⁻²	SI ¹⁻²	I ¹⁻³
Internally Flawless	Very Very Slightly Included	Very Slightly Included	Slightly Included	Included



ADDITIONAL GRADING INFORMATION

Polish **EXCELLENT**

Symmetry **EXCELLENT**

Fluorescence **NONE**

Inscription(s) **IGI LG645471475**

Comments: This Laboratory Grown Diamond was created by Chemical Vapor Deposition (CVD) growth process. Type IIa



IGI



July 29, 2024	IGI Report No LG645471475	CUT CORNERED RECT. MODIFIED BRILLIANT	9.33 X 6.57 X 4.18 MM	2.22 CARATS	E	VVS 2	EXCELLENT	63.6%	68%	Medium	Pointed	EXCELLENT	EXCELLENT	NONE	IGI LG645471475
				Carat Weight	Color Grade	Clarity Grade	Cut Grade	Depth	Table	Girdle	Culet	Polish	Symmetry	Fluorescence	Inscription(s)

Comments: This Laboratory Grown Diamond was created by Chemical Vapor Deposition (CVD) growth process. Type IIa