



ELECTRONIC COPY

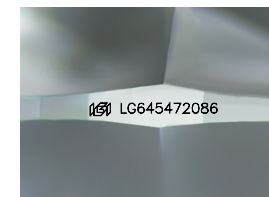
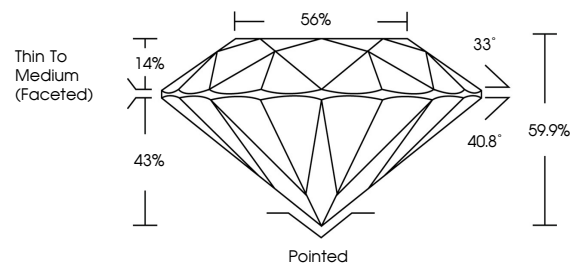
LG645472086
Report verification at igi.org



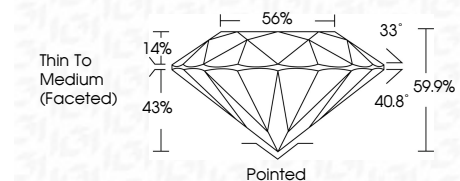
July 30, 2024
IGI Report Number LG645472086
Description LABORATORY GROWN DIAMOND
Shape and Cutting Style ROUND BRILLIANT
Measurements 8.03 - 8.06 X 4.82 MM
GRADING RESULTS
Carat Weight 1.88 CARAT
Color Grade D
Clarity Grade VS 1
Cut Grade IDEAL

July 30, 2024
IGI Report Number LG645472086
Description LABORATORY GROWN DIAMOND
Shape and Cutting Style ROUND BRILLIANT
Measurements 8.03 - 8.06 X 4.82 MM

PROPORTIONS



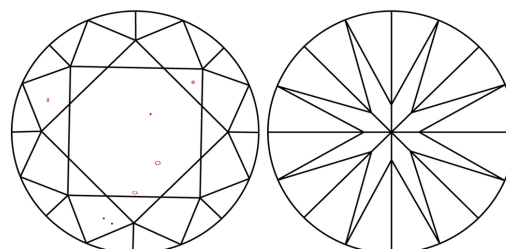
Sample Image Used



GRADING RESULTS

Carat Weight 1.88 CARAT
Color Grade D
Clarity Grade VS 1
Cut Grade IDEAL

CLARITY CHARACTERISTICS



ADDITIONAL GRADING INFORMATION

Polish EXCELLENT
Symmetry EXCELLENT
Fluorescence NONE
Inscription(s) IGI LG645472086

ADDITIONAL GRADING INFORMATION

Polish EXCELLENT
Symmetry EXCELLENT
Fluorescence NONE
Inscription(s) IGI LG645472086
Comments: This Laboratory Grown Diamond was created by Chemical Vapor Deposition (CVD) growth process. Type IIa

COLOR

D E F G H I J Faint Very Light Light

CLARITY

IF VS 1-2 VS 1-2 SI 1-2 I 1-3
Internally Flawless Very Very Slightly Included Very Slightly Included Slightly Included Included

KEY TO SYMBOLS

Red symbols indicate internal characteristics.
Green symbols indicate external characteristics.



July 30, 2024
IGI Report No LG645472086
ROUND BRILLIANT
8.03 - 8.06 X 4.82 MM
1.88 CARAT
D
VS 1
IDEAL
59.9%
56%
Thin To Medium (Faceted)
Pointed
EXCELLENT
EXCELLENT
NONE
IGI LG645472086
Comments: This Laboratory Grown Diamond was created by Chemical Vapor Deposition (CVD) growth process. Type IIa