



**ELECTRONIC COPY**

LG645472613  
Report verification at [igi.org](http://igi.org)



July 26, 2024  
IGI Report Number **LG645472613**  
Description **LABORATORY GROWN DIAMOND**  
Shape and Cutting Style **CUT CORNERED  
RECTANGULAR MODIFIED  
BRILLIANT**  
Measurements **7.74 X 5.50 X 3.57 MM**  
**GRADING RESULTS**  
Carat Weight **1.30 CARAT**  
Color Grade **E**  
Clarity Grade **VS 2**

July 26, 2024  
IGI Report Number **LG645472613**  
Description **LABORATORY GROWN DIAMOND**  
Shape and Cutting Style **CUT CORNERED RECTANGULAR  
MODIFIED BRILLIANT**  
Measurements **7.74 X 5.50 X 3.57 MM**

**GRADING RESULTS**

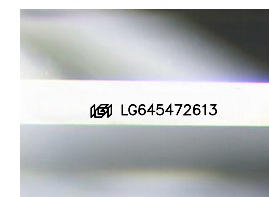
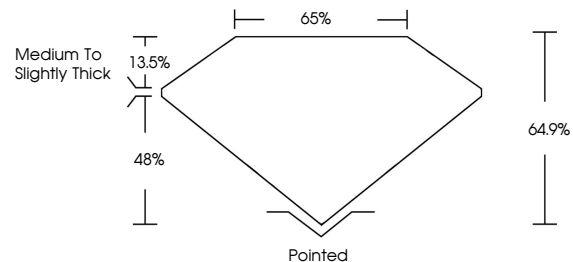
Carat Weight **1.30 CARAT**  
Color Grade **E**  
Clarity Grade **VS 2**

**ADDITIONAL GRADING INFORMATION**

Polish **EXCELLENT**  
Symmetry **EXCELLENT**  
Fluorescence **NONE**  
Inscription(s) **IGI LG645472613**

Comments: This Laboratory Grown Diamond was created by Chemical Vapor Deposition (CVD) growth process.  
Type IIa

**PROPORTIONS**



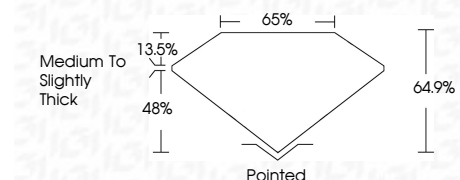
Sample Image Used

**COLOR**

D E F G H I J Faint Very Light Light

**CLARITY**

IF	VS <sup>1-2</sup>	VS <sup>1-2</sup>	SI <sup>1-2</sup>	I <sup>1-3</sup>
Internally Flawless	Very Very Slightly Included	Very Slightly Included	Slightly Included	Included



**ADDITIONAL GRADING INFORMATION**

Polish **EXCELLENT**  
Symmetry **EXCELLENT**  
Fluorescence **NONE**  
Inscription(s) **IGI LG645472613**  
Comments: This Laboratory Grown Diamond was created by Chemical Vapor Deposition (CVD) growth process.  
Type IIa



July 26, 2024  
IGI Report No **LG645472613**  
**CUT CORNERED RECT. MODIFIED BRILLIANT**  
**7.74 X 5.50 X 3.57 MM**  
Carat Weight **1.30 CARAT**  
Color Grade **E**  
Clarity Grade **VS 2**  
Depth **64.9%**  
Table **65%**  
Girdle **Medium to Slightly Thick**  
Culet **Pointed**  
Polish **EXCELLENT**  
Symmetry **EXCELLENT**  
Fluorescence **NONE**  
Inscription(s) **IGI LG645472613**

Comments: This Laboratory Grown Diamond was created by Chemical Vapor Deposition (CVD) growth process.  
Type IIa