



ELECTRONIC COPY

LG645478087 Report verification at igi.org

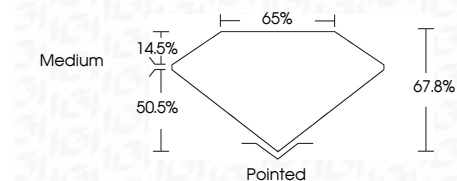


August 13, 2024 IGI Report Number LG645478087 Description LABORATORY GROWN DIAMOND

Shape and Cutting Style CUT CORNERED RECTANGULAR MODIFIED BRILLIANT

Measurements 9.56 X 6.65 X 4.51 MM

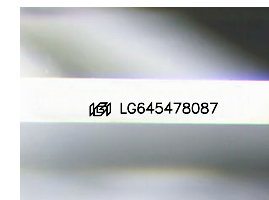
GRADING RESULTS Carat Weight 2.51 CARATS Color Grade D Clarity Grade VS 2



ADDITIONAL GRADING INFORMATION

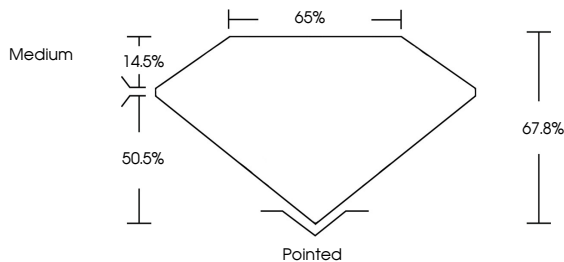
Polish VERY GOOD Symmetry EXCELLENT Fluorescence NONE Inscription(s) IGI LG645478087

Comments: This Laboratory Grown Diamond was created by Chemical Vapor Deposition (CVD) growth process. Type IIa

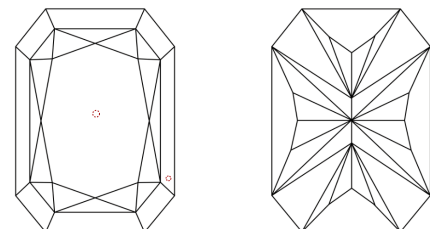


Sample Image Used

PROPORTIONS



CLARITY CHARACTERISTICS



KEY TO SYMBOLS Red symbols indicate internal characteristics. Green symbols indicate external characteristics.

COLOR

D E F G H I J Faint Very Light Light

CLARITY

IF VS 1-2 VS 1-2 SI 1-2 I 1-3 Internally Flawless Very Very Slightly Included Very Slightly Included Slightly Included Included



August 13, 2024 IGI Report Number LG645478087 Description LABORATORY GROWN DIAMOND Shape and Cutting Style CUT CORNERED RECTANGULAR MODIFIED BRILLIANT Measurements 9.56 X 6.65 X 4.51 MM

GRADING RESULTS

Carat Weight 2.51 CARATS Color Grade D Clarity Grade VS 2

ADDITIONAL GRADING INFORMATION

Polish VERY GOOD Symmetry EXCELLENT Fluorescence NONE

Inscription(s) IGI LG645478087

Comments: This Laboratory Grown Diamond was created by Chemical Vapor Deposition (CVD) growth process. Type IIa

August 13, 2024 IGI Report No LG645478087 CUT CORNERED RECT. MODIFIED BRILLIANT 9.56 X 6.65 X 4.51 MM 2.51 CARATS D VS 2 67.8% 65% Medium Pointed VERY GOOD EXCELLENT NONE IGI LG645478087 Comments: This Laboratory Grown Diamond was created by Chemical Vapor Deposition (CVD) growth process. Type IIa