



ELECTRONIC COPY

LG645478210
Report verification at igi.org



August 13, 2024

IGI Report Number **LG645478210**

Description **LABORATORY GROWN DIAMOND**

Shape and Cutting Style **PRINCESS CUT**

Measurements **5.50 X 5.39 X 3.94 MM**

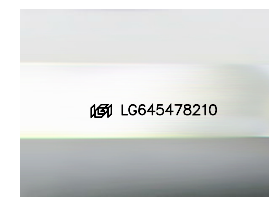
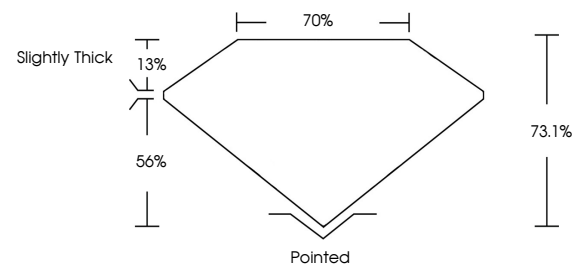
GRADING RESULTS

Carat Weight **1.02 CARAT**

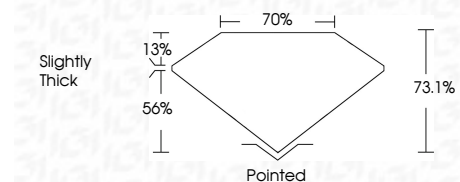
Color Grade **D**

Clarity Grade **VVS 2**

PROPORTIONS



Sample Image Used



ADDITIONAL GRADING INFORMATION

Polish **EXCELLENT**

Symmetry **EXCELLENT**

Fluorescence **NONE**

Inscription(s) **IGI LG645478210**

Comments: This Laboratory Grown Diamond was created by Chemical Vapor Deposition (CVD) growth process. Type IIa



IGI

COLOR

D E F G H I J Faint Very Light Light

CLARITY

IF	VS ¹⁻²	VS ¹⁻²	SI ¹⁻²	I ¹⁻³
Internally Flawless	Very Very Slightly Included	Very Slightly Included	Slightly Included	Included



August 13, 2024
IGI Report No **LG645478210**
PRINCESS CUT

1.02 CARAT
D

5.50 X 5.39 X 3.94 MM
Color Grade **D**
Clarity Grade **VVS 2**
Depth **73.1%**
Table **70%**
Girdle **Slightly Thick**

Pointed
Culet **EXCELLENT**
Polish **EXCELLENT**
Symmetry **EXCELLENT**
Fluorescence **NONE**
Inscription(s) **IGI LG645478210**

Comments: This Laboratory Grown Diamond was created by Chemical Vapor Deposition (CVD) growth process. Type IIa