



**ELECTRONIC COPY**

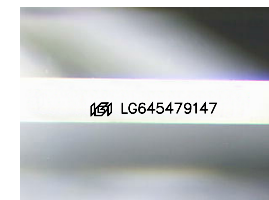
LG645479147  
Report verification at igi.org



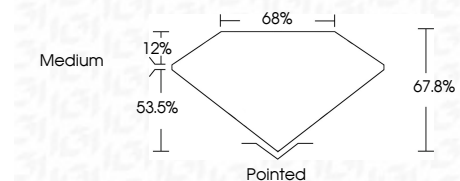
August 16, 2024  
IGI Report Number **LG645479147**  
Description **LABORATORY GROWN DIAMOND**  
Shape and Cutting Style **PRINCESS CUT**  
Measurements **6.59 X 6.58 X 4.46 MM**

**GRADING RESULTS**

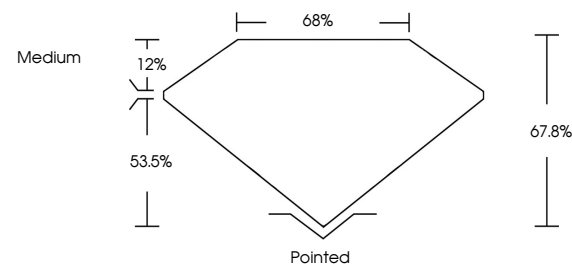
Carat Weight **1.75 CARAT**  
Color Grade **E**  
Clarity Grade **VS 2**



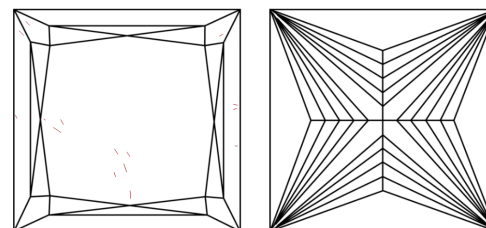
Sample Image Used



**PROPORTIONS**



**CLARITY CHARACTERISTICS**



**KEY TO SYMBOLS**

Red symbols indicate internal characteristics.  
Green symbols indicate external characteristics.

**COLOR**

D E F G H I J Faint Very Light Light

**CLARITY**

IF	VS <sup>1-2</sup>	VS <sup>1-2</sup>	SI <sup>1-2</sup>	I <sup>1-3</sup>
Internally Flawless	Very Very Slightly Included	Very Slightly Included	Slightly Included	Included

**ADDITIONAL GRADING INFORMATION**

Polish **EXCELLENT**  
Symmetry **EXCELLENT**  
Fluorescence **NONE**  
Inscription(s) **IGI LG645479147**  
Comments: As Grown - No indication of post-growth treatment.  
This Laboratory Grown Diamond was created by High Pressure High Temperature (HPHT) growth process.  
Type II



**IGI**



August 16, 2024  
IGI Report No. **LG645479147**  
**PRINCESS CUT**  
**6.59 X 6.58 X 4.46 MM**  
Carat Weight **1.75 CARAT**  
Color Grade **E**  
Clarity Grade **VS 2**  
Depth **67.6%**  
Table **65%**  
Girdle **Medium**  
Culet **Pointed**  
Polish **EXCELLENT**  
Symmetry **EXCELLENT**  
Fluorescence **NONE**  
Inscription(s) **IGI LG645479147**  
Comments: As Grown - No indication of post-growth treatment.  
This Laboratory Grown Diamond was created by High Pressure High Temperature (HPHT) growth process.  
Type II