



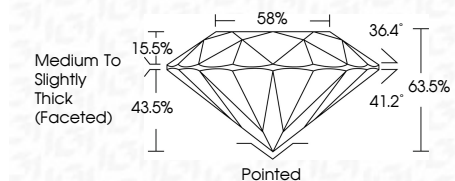
ELECTRONIC COPY

LG645482257 Report verification at igi.org



July 27, 2024 IGI Report Number LG645482257 Description LABORATORY GROWN DIAMOND Shape and Cutting Style ROUND BRILLIANT Measurements 7.94 - 7.99 X 5.05 MM

GRADING RESULTS Carat Weight 2.01 CARATS Color Grade E Clarity Grade VS 2 Cut Grade EXCELLENT

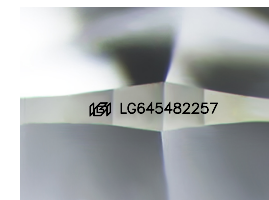


ADDITIONAL GRADING INFORMATION Polish EXCELLENT Symmetry EXCELLENT Fluorescence NONE Inscription(s) IGI LG645482257 Comments: This Laboratory Grown Diamond was created by Chemical Vapor Deposition (CVD) growth process. Type IIa



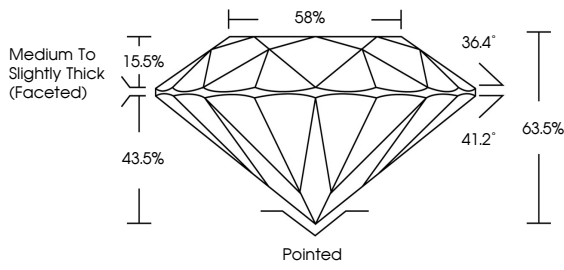
July 27, 2024 IGI Report No LG645482257 ROUND BRILLIANT 7.94 - 7.99 X 5.05 MM 2.01 CARATS E VS 2 EXCELLENT 63.5% 58% Medium To Slightly Thick (Faceted) Pointed EXCELLENT EXCELLENT NONE IGI LG645482257

Comments: This Laboratory Grown Diamond was created by Chemical Vapor Deposition (CVD) growth process. Type IIa

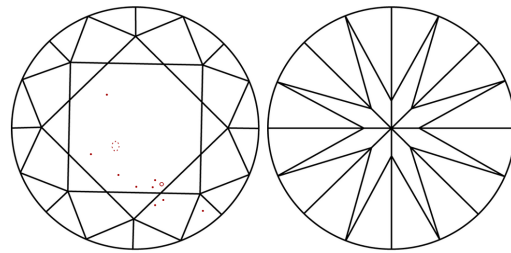


Sample Image Used

PROPORTIONS



CLARITY CHARACTERISTICS



KEY TO SYMBOLS Red symbols indicate internal characteristics. Green symbols indicate external characteristics.

COLOR

Table with color grades: D, E, F, G, H, I, J, Faint, Very Light, Light

CLARITY

Table with clarity grades: IF, VVS 1-2, VS 1-2, SI 1-2, I 1-3, Internally Flawless, Very Very Slightly Included, Very Slightly Included, Slightly Included, Included



July 27, 2024 IGI Report Number LG645482257 Description LABORATORY GROWN DIAMOND Shape and Cutting Style ROUND BRILLIANT Measurements 7.94 - 7.99 X 5.05 MM

GRADING RESULTS Carat Weight 2.01 CARATS Color Grade E Clarity Grade VS 2 Cut Grade EXCELLENT

ADDITIONAL GRADING INFORMATION Polish EXCELLENT Symmetry EXCELLENT Fluorescence NONE Inscription(s) IGI LG645482257

Comments: This Laboratory Grown Diamond was created by Chemical Vapor Deposition (CVD) growth process. Type IIa