

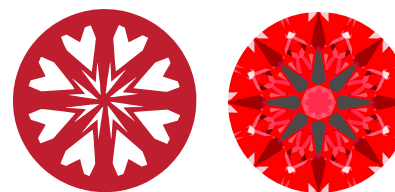


**INTERNATIONAL  
GEMOLOGICAL  
INSTITUTE**

LG645482475  
Report verification at [igi.org](http://igi.org)

**LIGHT PERFORMANCE REPORT**

Light Performance Grade: **Exceptional**



Ideal-Scope representation



**COLOR**

D E F G H I J Faint Very Light Light

**CLARITY**

IF	VS <sup>1-2</sup>	VS <sup>1-2</sup>	SI <sup>1-2</sup>	I <sup>1-3</sup>
Internally Flawless	Very Very Slightly Included	Very Slightly Included	Slightly Included	Included

**ELECTRONIC COPY**

**LABORATORY GROWN DIAMOND REPORT**

July 26, 2024  
IGI Report Number **LG645482475**  
Description **LABORATORY GROWN DIAMOND**  
Shape and Cutting Style **ROUND BRILLIANT**  
Measurements **6.92 - 6.95 x 4.20 mm**

**GRADING RESULTS**

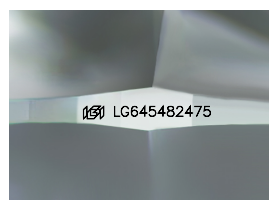
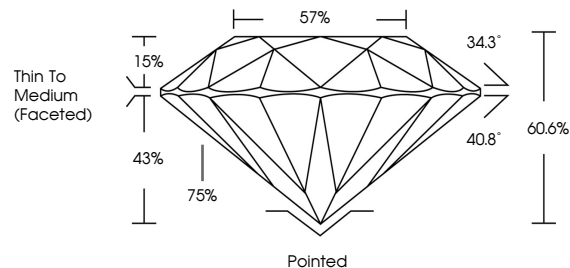
Carat Weight **1.22 CARAT**  
Color Grade **D**  
Clarity Grade **VVS 2**  
Cut Grade **IDEAL**

**ADDITIONAL GRADING INFORMATION**

Polish **EXCELLENT**  
Symmetry **EXCELLENT**  
Fluorescence **NONE**  
Inscription(s) **IGI LG645482475**

Comments: HEARTS & ARROWS  
This Laboratory Grown Diamond was created by Chemical Vapor Deposition (CVD) growth process. Type IIa

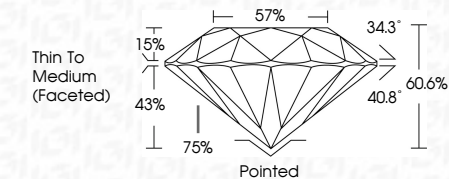
**PROPORTIONS**



Sample Image Used



July 26, 2024  
IGI Report Number **LG645482475**  
Description **LABORATORY GROWN DIAMOND**  
Shape and Cutting Style **ROUND BRILLIANT**  
Measurements **6.92 - 6.95 X 4.20 MM**  
**GRADING RESULTS**  
Carat Weight **1.22 CARAT**  
Color Grade **D**  
Clarity Grade **VVS 2**  
Cut Grade **IDEAL**



**ADDITIONAL GRADING INFORMATION**

Polish **EXCELLENT**  
Symmetry **EXCELLENT**  
Fluorescence **NONE**  
Inscription(s) **IGI LG645482475**  
Comments: HEARTS & ARROWS  
This Laboratory Grown Diamond was created by Chemical Vapor Deposition (CVD) growth process. Type IIa



**IGI**



July 26, 2024  
IGI Report No **LG645482475**  
**ROUND BRILLIANT**  
**6.92 - 6.95 X 4.20 MM**  
Carat Weight **1.22 CARAT**  
Color Grade **D**  
Clarity Grade **VVS 2**  
Cut Grade **IDEAL**  
Depth **60.6%**  
Table **57%**  
Girdle **Thin To Medium (Faceted)**  
Culet **Pointed**  
Polish **EXCELLENT**  
Symmetry **EXCELLENT**  
Fluorescence **NONE**  
Inscription(s) **IGI LG645482475**  
Comments: HEARTS & ARROWS  
This Laboratory Grown Diamond was created by Chemical Vapor Deposition (CVD) growth process. Type IIa