



**INTERNATIONAL
GEMOLOGICAL
INSTITUTE**

ELECTRONIC COPY

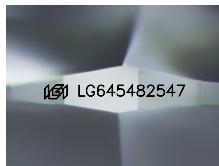
LG645482547



July 30, 2024
IGI Report Number LG645482547
ROUND BRILLIANT
LABORATORY GROWN DIAMOND
5.16 - 5.18 X 3.20 MM
 Carat Weight **0.53 CARAT**
 Color Grade **D**
 Clarity Grade **VVS 1**
 Cut Grade **IDEAL**
 Polish **EXCELLENT**
 Symmetry **EXCELLENT**
 Fluorescence **NONE**
 Inscription(s) **IGI LG645482547**

LABORATORY GROWN DIAMOND REPORT

July 30, 2024
 IGI Report Number **LG645482547**
 Description **LABORATORY GROWN DIAMOND**
 Shape and Cutting Style **ROUND BRILLIANT**
 Measurements **5.16 - 5.18 X 3.20 MM**



Sample Image Used

Comments: This Laboratory Grown Diamond was created by Chemical Vapor Deposition (CVD) growth process. Type IIa

GRADING RESULTS

Carat Weight **0.53 CARAT**
 Color Grade **D**
 Clarity Grade **VVS 1**
 Cut Grade **IDEAL**

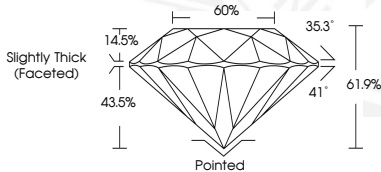
ADDITIONAL GRADING INFORMATION

Polish **EXCELLENT**
 Symmetry **EXCELLENT**
 Fluorescence **NONE**
 Inscription(s) **IGI LG645482547**

Comments: This Laboratory Grown Diamond was created by Chemical Vapor Deposition (CVD) growth process. Type IIa



July 30, 2024
IGI Report Number LG645482547
ROUND BRILLIANT
LABORATORY GROWN DIAMOND
5.16 - 5.18 X 3.20 MM
 Carat Weight **0.53 CARAT**
 Color Grade **D**
 Clarity Grade **VVS 1**
 Cut Grade **IDEAL**
 Polish **EXCELLENT**
 Symmetry **EXCELLENT**
 Fluorescence **NONE**
 Inscription(s) **IGI LG645482547**



Comments: This Laboratory Grown Diamond was created by Chemical Vapor Deposition (CVD) growth process. Type IIa

THIS DOCUMENT WAS PRODUCED WITH THE FOLLOWING SECURITY MEASURES: SPECIAL DOCUMENT PAPER, INK SCREENS, WATERMARK, BACKGROUND DESIGN, HOLOGRAM AND OTHER SECURITY FEATURES NOT LISTED AND DO EXCEED DOCUMENT SECURITY INDUSTRY GUIDELINES.

For terms & conditions and to verify this report, please visit www.igi.org