



ELECTRONIC COPY

LG645483049 Report verification at igi.org

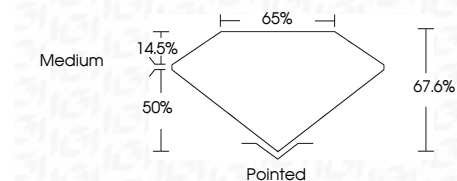


July 31, 2024 IGI Report Number LG645483049 Description LABORATORY GROWN DIAMOND Shape and Cutting Style CUT CORNERED RECTANGULAR MODIFIED BRILLIANT

Measurements 7.46 X 5.03 X 3.40 MM

GRADING RESULTS

Carat Weight 1.07 CARAT Color Grade D Clarity Grade VS 2



ADDITIONAL GRADING INFORMATION

Polish EXCELLENT Symmetry EXCELLENT Fluorescence NONE Inscription(s) LG645483049 Comments: This Laboratory Grown Diamond was created by Chemical Vapor Deposition (CVD) growth process. Type IIa



July 31, 2024 IGI Report No LG645483049 CUT CORNERED RECT. MODIFIED BRILLIANT 1.07 CARAT D VS 2 67.6% 50% Medium Pointed EXCELLENT EXCELLENT NONE NONE LG645483049

Comments: This Laboratory Grown Diamond was created by Chemical Vapor Deposition (CVD) growth process. Type IIa

LABORATORY GROWN DIAMOND REPORT

July 31, 2024 IGI Report Number LG645483049 Description LABORATORY GROWN DIAMOND Shape and Cutting Style CUT CORNERED RECTANGULAR MODIFIED BRILLIANT Measurements 7.46 X 5.03 X 3.40 MM

GRADING RESULTS

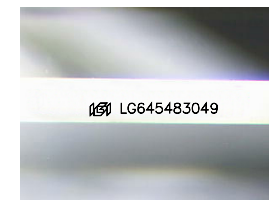
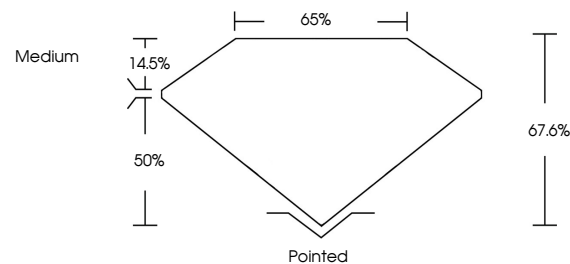
Carat Weight 1.07 CARAT Color Grade D Clarity Grade VS 2

ADDITIONAL GRADING INFORMATION

Polish EXCELLENT Symmetry EXCELLENT Fluorescence NONE Inscription(s) LG645483049

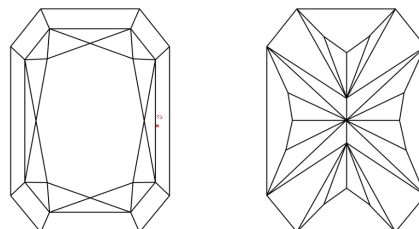
Comments: This Laboratory Grown Diamond was created by Chemical Vapor Deposition (CVD) growth process. Type IIa

PROPORTIONS



Sample Image Used

CLARITY CHARACTERISTICS



KEY TO SYMBOLS

Red symbols indicate internal characteristics. Green symbols indicate external characteristics.

COLOR

D E F G H I J Faint Very Light Light

CLARITY

IF VS 1-2 VS 1-2 SI 1-2 I 1-3 Internally Flawless Very Very Slightly Included Very Slightly Included Slightly Included Included

