



ELECTRONIC COPY

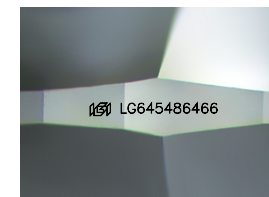
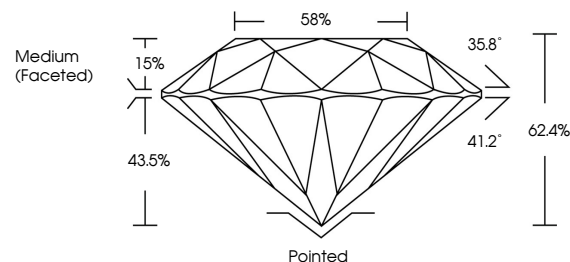
LG645486466 Report verification at igi.org



July 27, 2024
IGI Report Number LG645486466
Description LABORATORY GROWN DIAMOND
Shape and Cutting Style ROUND BRILLIANT
Measurements 6.41 - 6.41 X 4.00 MM
GRADING RESULTS
Carat Weight 1.01 CARAT
Color Grade D
Clarity Grade VVS 2
Cut Grade IDEAL

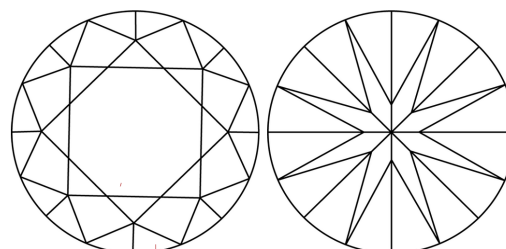
July 27, 2024
IGI Report Number LG645486466
Description LABORATORY GROWN DIAMOND
Shape and Cutting Style ROUND BRILLIANT
Measurements 6.41 - 6.41 X 4.00 MM

PROPORTIONS



Sample Image Used

CLARITY CHARACTERISTICS



KEY TO SYMBOLS

Red symbols indicate internal characteristics.
Green symbols indicate external characteristics.

GRADING RESULTS

Carat Weight 1.01 CARAT
Color Grade D
Clarity Grade VVS 2
Cut Grade IDEAL

ADDITIONAL GRADING INFORMATION

Polish EXCELLENT
Symmetry EXCELLENT
Fluorescence NONE
Inscription(s) LG645486466

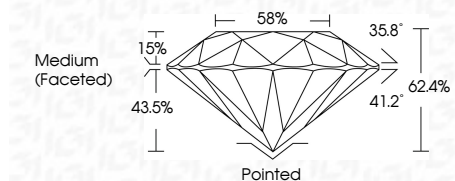
Comments: This Laboratory Grown Diamond was created by Chemical Vapor Deposition (CVD) growth process. Type IIa

COLOR

D E F G H I J Faint Very Light Light

CLARITY

IF VVS 1-2 VS 1-2 SI 1-2 I 1-3
Internally Flawless Very Very Slightly Included Very Slightly Included Slightly Included Included



ADDITIONAL GRADING INFORMATION

Polish EXCELLENT
Symmetry EXCELLENT
Fluorescence NONE
Inscription(s) LG645486466
Comments: This Laboratory Grown Diamond was created by Chemical Vapor Deposition (CVD) growth process. Type IIa



July 27, 2024
IGI Report No LG645486466
ROUND BRILLIANT
6.41 - 6.41 X 4.00 MM
1.01 CARAT
Color Grade D
Clarity Grade VVS 2
Depth 62.4%
Table 58%
Medium (Faceted)
Cutler Pointed
Polish EXCELLENT
Symmetry EXCELLENT
Fluorescence NONE
Inscriptions(s) IGI LG645486466
Comments: This Laboratory Grown Diamond was created by Chemical Vapor Deposition (CVD) growth process. Type IIa