



ELECTRONIC COPY

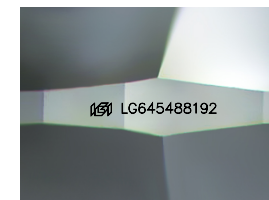
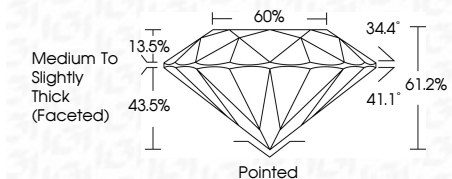
LG645488192
Report verification at igi.org



July 27, 2024
IGI Report Number LG645488192
Description LABORATORY GROWN DIAMOND
Shape and Cutting Style ROUND BRILLIANT
Measurements 8.15 - 8.19 X 5.00 MM

GRADING RESULTS

Carat Weight 2.07 CARATS
Color Grade F
Clarity Grade VS 1
Cut Grade IDEAL



Sample Image Used

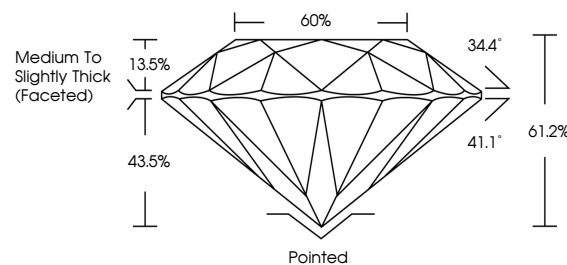
ADDITIONAL GRADING INFORMATION

Polish EXCELLENT
Symmetry EXCELLENT
Fluorescence NONE
Inscription(s) LG645488192
Comments: This Laboratory Grown Diamond was created by Chemical Vapor Deposition (CVD) growth process. Type IIa

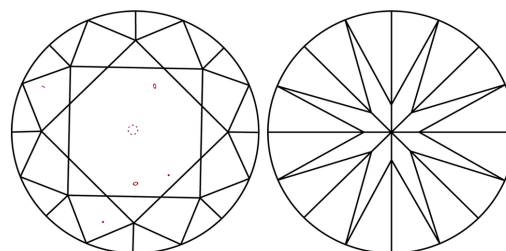


July 27, 2024
IGI Report No LG645488192
ROUND BRILLIANT
8.15 - 8.19 X 5.00 MM
2.07 CARATS F
Color Grade VS 1 IDEAL
Clarity Grade VS 1 IDEAL
Depth 61.2%
Table 60%
Girdle Medium To Slightly Thick (Faceted)
Culet Pointed
Polish EXCELLENT
Symmetry EXCELLENT
Fluorescence NONE
Inscriptions(s) IGI LG645488192
Comments: This Laboratory Grown Diamond was created by Chemical Vapor Deposition (CVD) growth process. Type IIa

PROPORTIONS



CLARITY CHARACTERISTICS



KEY TO SYMBOLS

Red symbols indicate internal characteristics.
Green symbols indicate external characteristics.

COLOR

D E F G H I J Faint Very Light Light

CLARITY

IF VS 1-2 VS 1-2 SI 1-2 I 1-3
Internally Flawless Very Very Slightly Included Very Slightly Included Slightly Included Included

