



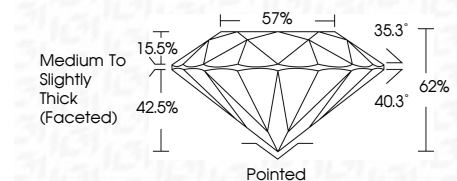
ELECTRONIC COPY

LG645489371 Report verification at igi.org



August 2, 2024 IGI Report Number LG645489371 Description LABORATORY GROWN DIAMOND Shape and Cutting Style ROUND BRILLIANT Measurements 8.13 - 8.19 X 5.07 MM

GRADING RESULTS Carat Weight 2.11 CARATS Color Grade F Clarity Grade VS 2 Cut Grade EXCELLENT



ADDITIONAL GRADING INFORMATION Polish EXCELLENT Symmetry EXCELLENT Fluorescence NONE Inscription(s) LG645489371 Comments: This Laboratory Grown Diamond was created by Chemical Vapor Deposition (CVD) growth process. Type IIa



August 2, 2024 IGI Report No LG645489371 ROUND BRILLIANT 8.13 - 8.19 X 5.07 MM 2.11 CARATS F VS 2 EXCELLENT 62% 57% Medium To Slightly Thick (Faceted) Pointed EXCELLENT EXCELLENT NONE NONE LG645489371

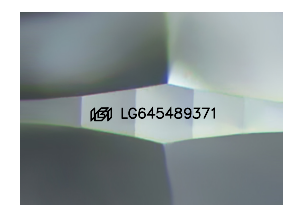
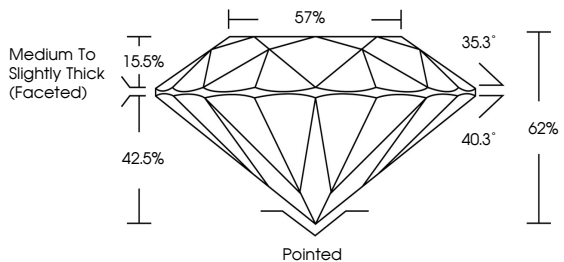
August 2, 2024 IGI Report Number LG645489371 Description LABORATORY GROWN DIAMOND Shape and Cutting Style ROUND BRILLIANT Measurements 8.13 - 8.19 X 5.07 MM

GRADING RESULTS Carat Weight 2.11 CARATS Color Grade F Clarity Grade VS 2 Cut Grade EXCELLENT

ADDITIONAL GRADING INFORMATION Polish EXCELLENT Symmetry EXCELLENT Fluorescence NONE Inscription(s) LG645489371

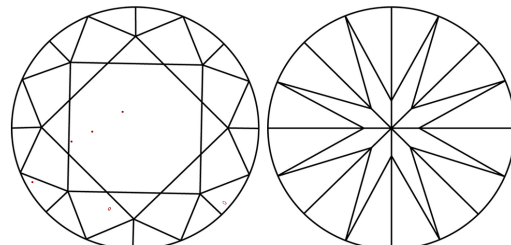
Comments: This Laboratory Grown Diamond was created by Chemical Vapor Deposition (CVD) growth process. Type IIa

PROPORTIONS



Sample Image Used

CLARITY CHARACTERISTICS



KEY TO SYMBOLS Red symbols indicate internal characteristics. Green symbols indicate external characteristics.

COLOR table with categories D, E, F, G, H, I, J, Faint, Very Light, Light

CLARITY table with categories IF, VVS 1-2, VS 1-2, SI 1-2, I 1-3, Internally Flawless, Very Very Slightly Included, Very Slightly Included, Slightly Included, Included

