



ELECTRONIC COPY

LG645489965
Report verification at igi.org



July 30, 2024

IGI Report Number **LG645489965**

Description **LABORATORY GROWN DIAMOND**

Shape and Cutting Style **PRINCESS CUT**

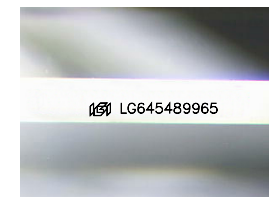
Measurements **5.86 X 5.81 X 3.97 MM**

GRADING RESULTS

Carat Weight **1.16 CARAT**

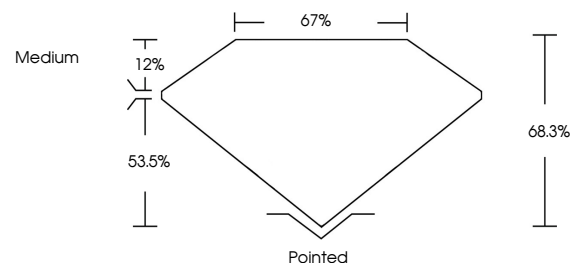
Color Grade **D**

Clarity Grade **VS 1**

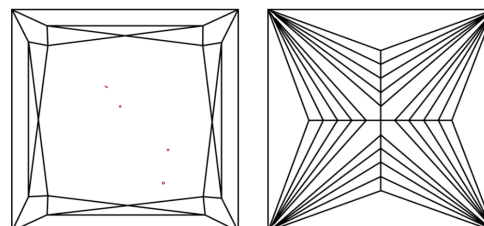


Sample Image Used

PROPORTIONS



CLARITY CHARACTERISTICS



KEY TO SYMBOLS

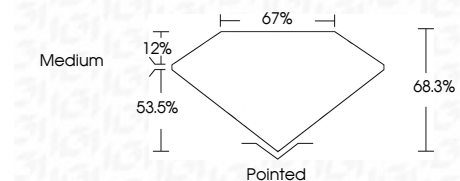
Red symbols indicate internal characteristics.
Green symbols indicate external characteristics.

COLOR

D E F G H I J Faint Very Light Light

CLARITY

IF	VS ¹⁻²	VS ¹⁻²	SI ¹⁻²	I ¹⁻³
Internally Flawless	Very Very Slightly Included	Very Slightly Included	Slightly Included	Included



ADDITIONAL GRADING INFORMATION

Polish **EXCELLENT**

Symmetry **EXCELLENT**

Fluorescence **NONE**

Inscription(s) **IGI LG645489965**

Comments: This Laboratory Grown Diamond was created by Chemical Vapor Deposition (CVD) growth process.
Type IIa



IGI



July 30, 2024
IGI Report No. LG645489965
PRINCESS CUT
5.86 X 5.81 X 3.97 MM
1.16 CARAT
D
VS 1
68.3%
67%
Medium
Pointed
EXCELLENT
EXCELLENT
NONE
IGI LG645489965

Comments: This Laboratory Grown Diamond was created by Chemical Vapor Deposition (CVD) growth process.
Type IIa