



ELECTRONIC COPY

LG645491861 Report verification at igi.org



August 1, 2024
IGI Report Number LG645491861
Description LABORATORY GROWN DIAMOND
Shape and Cutting Style CUSHION BRILLIANT
Measurements 11.87 X 9.28 X 6.09 MM
GRADING RESULTS
Carat Weight 5.04 CARATS
Color Grade D
Clarity Grade INTERNALLY FLAWLESS
Cut Grade EXCELLENT

LABORATORY GROWN DIAMOND REPORT

August 1, 2024
IGI Report Number LG645491861
Description LABORATORY GROWN DIAMOND
Shape and Cutting Style CUSHION BRILLIANT
Measurements 11.87 X 9.28 X 6.09 MM

GRADING RESULTS

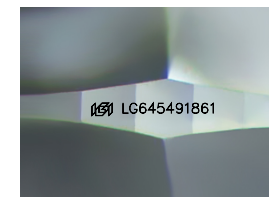
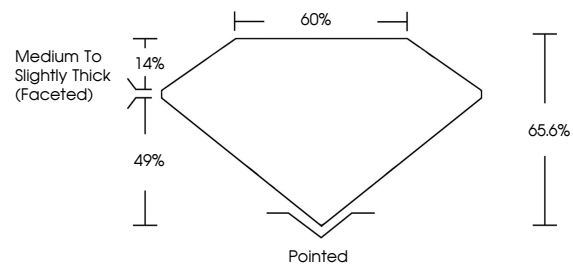
Carat Weight 5.04 CARATS
Color Grade D
Clarity Grade INTERNALLY FLAWLESS
Cut Grade EXCELLENT

ADDITIONAL GRADING INFORMATION

Polish EXCELLENT
Symmetry EXCELLENT
Fluorescence NONE
Inscription(s) IGI LG645491861

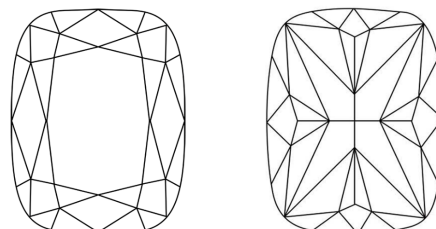
Comments: As Grown - No indication of post-growth treatment. This Laboratory Grown Diamond was created by High Pressure High Temperature (HPHT) growth process. Type II

PROPORTIONS



Sample Image Used

CLARITY CHARACTERISTICS



KEY TO SYMBOLS

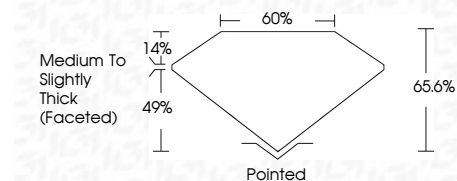
Red symbols indicate internal characteristics. Green symbols indicate external characteristics.

COLOR

D E F G H I J Faint Very Light Light

CLARITY

IF VS 1-2 VS 1-2 SI 1-2 I 1-3
Internally Flawless Very Very Slightly Included Very Slightly Included Slightly Included Included



ADDITIONAL GRADING INFORMATION

Polish EXCELLENT
Symmetry EXCELLENT
Fluorescence NONE
Inscription(s) IGI LG645491861
Comments: As Grown - No indication of post-growth treatment. This Laboratory Grown Diamond was created by High Pressure High Temperature (HPHT) growth process. Type II



August 1, 2024
IGI Report No LG645491861
CUSHION BRILLIANT
11.87 X 9.28 X 6.09 MM
5.04 CARATS
Color Grade D
Clarity Grade EXCELLENT
Depth 66.0%
Table 60%
Girdle Medium To Slightly Thick (Faceted)
Culet Pointed
Polish EXCELLENT
Symmetry EXCELLENT
Fluorescence NONE
Inscriptions(s) IGI LG645491861
Comments: As Grown - No indication of post-growth treatment. This Laboratory Grown Diamond was created by High Pressure High Temperature (HPHT) growth process. Type II