



**ELECTRONIC COPY**

LG645492190  
Report verification at igi.org



July 29, 2024

IGI Report Number **LG645492190**

Description **LABORATORY GROWN DIAMOND**

Shape and Cutting Style **EMERALD CUT**

Measurements **10.09 X 7.16 X 5.01 MM**

**GRADING RESULTS**

Carat Weight **3.54 CARATS**

Color Grade **G**

Clarity Grade **VVS 2**

July 29, 2024  
IGI Report Number **LG645492190**  
Description **LABORATORY GROWN DIAMOND**  
Shape and Cutting Style **EMERALD CUT**  
Measurements **10.09 X 7.16 X 5.01 MM**

**GRADING RESULTS**

Carat Weight **3.54 CARATS**

Color Grade **G**

Clarity Grade **VVS 2**

**ADDITIONAL GRADING INFORMATION**

Polish **EXCELLENT**

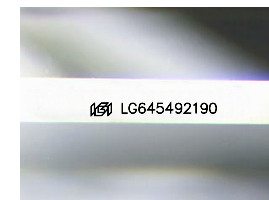
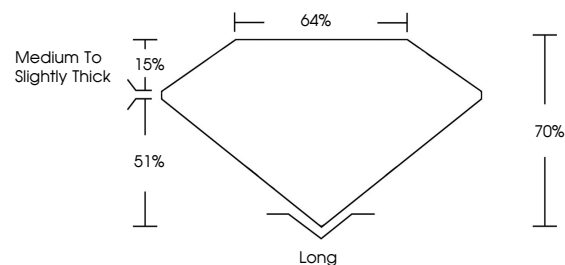
Symmetry **EXCELLENT**

Fluorescence **NONE**

Inscription(s) **IGI LG645492190**

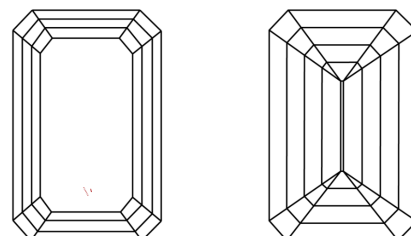
Comments: This Laboratory Grown Diamond was created by Chemical Vapor Deposition (CVD) growth process.  
Type IIa

**PROPORTIONS**



Sample Image Used

**CLARITY CHARACTERISTICS**



**KEY TO SYMBOLS**

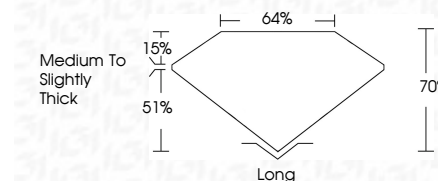
Red symbols indicate internal characteristics.  
Green symbols indicate external characteristics.

**COLOR**

D E F G H I J Faint Very Light Light

**CLARITY**

IF	VS <sup>1-2</sup>	VS <sup>1-2</sup>	SI <sup>1-2</sup>	I <sup>1-3</sup>
Internally Flawless	Very Very Slightly Included	Very Slightly Included	Slightly Included	Included



**ADDITIONAL GRADING INFORMATION**

Polish **EXCELLENT**

Symmetry **EXCELLENT**

Fluorescence **NONE**

Inscription(s) **IGI LG645492190**

Comments: This Laboratory Grown Diamond was created by Chemical Vapor Deposition (CVD) growth process.  
Type IIa



**IGI**



July 29, 2024  
IGI Report No. **LG645492190**  
**EMERALD CUT**

**3.54 CARATS**  
Carat Weight  
Color Grade **G**  
Clarity Grade **VVS 2**  
Table **70%**  
Girdle **64%**  
Culet **Medium to Slightly Thick**  
Polish **EXCELLENT**  
Symmetry **EXCELLENT**  
Fluorescence **NONE**  
Inscription(s) **IGI LG645492190**

Comments: This Laboratory Grown Diamond was created by Chemical Vapor Deposition (CVD) growth process.  
Type IIa