

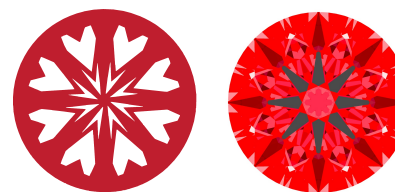


**INTERNATIONAL  
GEMOLOGICAL  
INSTITUTE**

LG645492524  
Report verification at [igi.org](http://igi.org)

**LIGHT PERFORMANCE REPORT**

Light Performance Grade: **Exceptional**



Ideal-Scope representation

Low Moderate High Superior Exceptional

**Light Performance**



**COLOR**

D E F G H I J Faint Very Light Light

**CLARITY**

IF	VS <sup>1-2</sup>	VS <sup>1-2</sup>	SI <sup>1-2</sup>	I <sup>1-3</sup>
Internally Flawless	Very Very Slightly Included	Very Slightly Included	Slightly Included	Included

**ELECTRONIC COPY**

**LABORATORY GROWN DIAMOND REPORT**

July 27, 2024  
IGI Report Number **LG645492524**  
Description **LABORATORY GROWN DIAMOND**  
Shape and Cutting Style **ROUND BRILLIANT**  
Measurements **6.88 - 6.90 x 4.25 mm**

**GRADING RESULTS**

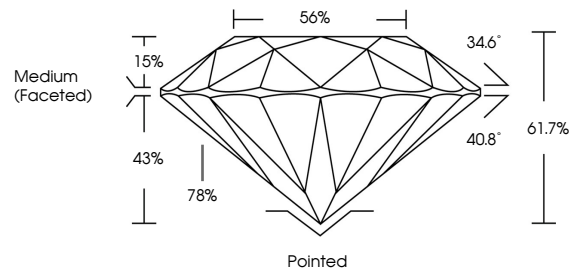
Carat Weight **1.23 CARAT**  
Color Grade **D**  
Clarity Grade **VVS 2**  
Cut Grade **IDEAL**

**ADDITIONAL GRADING INFORMATION**

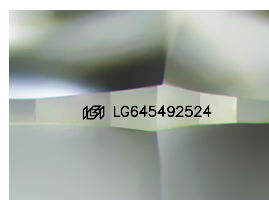
Polish **EXCELLENT**  
Symmetry **EXCELLENT**  
Fluorescence **NONE**  
Inscription(s) **IGI LG645492524**

Comments: HEARTS & ARROWS  
This Laboratory Grown Diamond was created by Chemical Vapor Deposition (CVD) growth process. Type IIa

**PROPORTIONS**



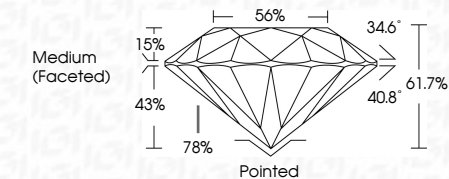
Pointed



Sample Image Used



July 27, 2024  
IGI Report Number **LG645492524**  
Description **LABORATORY GROWN DIAMOND**  
Shape and Cutting Style **ROUND BRILLIANT**  
Measurements **6.88 - 6.90 X 4.25 MM**  
**GRADING RESULTS**  
Carat Weight **1.23 CARAT**  
Color Grade **D**  
Clarity Grade **VVS 2**  
Cut Grade **IDEAL**



**ADDITIONAL GRADING INFORMATION**

Polish **EXCELLENT**  
Symmetry **EXCELLENT**  
Fluorescence **NONE**  
Inscription(s) **IGI LG645492524**  
Comments: HEARTS & ARROWS  
This Laboratory Grown Diamond was created by Chemical Vapor Deposition (CVD) growth process. Type IIa



**IGI**

[www.igi.org](http://www.igi.org)

© IGI 2020, International Gemological Institute

FD - 10 20

THIS DOCUMENT WAS PRODUCED WITH THE FOLLOWING SECURITY MEASURES: SPECIAL DOCUMENT PAPER, INK SCREENS, WATERMARK, BACKGROUND DESIGNS, HOLOGRAM AND OTHER SECURITY FEATURES NOT LISTED AND DO EXCEED DOCUMENT SECURITY INDUSTRY GUIDELINES.

July 27, 2024  
IGI Report No **LG645492524**  
**ROUND BRILLIANT**  
6.88 - 6.90 X 4.25 MM  
Carat Weight **1.23 CARAT**  
Color Grade **D**  
Clarity Grade **VVS 2**  
Cut Grade **IDEAL**  
Depth **61.7%**  
Table **15%**  
Girdle **Medium (Faceted)**  
Culet **Pointed**  
Polish **EXCELLENT**  
Symmetry **EXCELLENT**  
Fluorescence **NONE**  
Inscription(s) **IGI LG645492524**  
Comments: HEARTS & ARROWS  
This Laboratory Grown Diamond was created by Chemical Vapor Deposition (CVD) growth process. Type IIa

