



**INTERNATIONAL
GEMOLOGICAL
INSTITUTE**

ELECTRONIC COPY

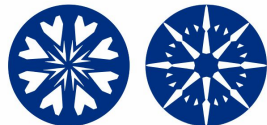
LG645492541



July 29, 2024
IGI Report Number LG645492541
ROUND BRILLIANT
LABORATORY GROWN DIAMOND
5.08 - 5.10 X 3.00 MM
Carat Weight 0.47 CARAT
Color Grade D
Clarity Grade VVS 1
Cut Grade EXCELLENT
Polish EXCELLENT
Symmetry EXCELLENT
Fluorescence NONE
Inscription(s) IGI LG645492541

LABORATORY GROWN DIAMOND REPORT

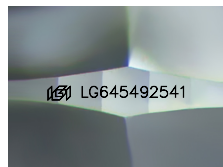
July 29, 2024
 IGI Report Number **LG645492541**
 Description **LABORATORY GROWN DIAMOND**
 Shape and Cutting Style **ROUND BRILLIANT**
 Measurements **5.08 - 5.10 X 3.00 MM**



HEARTS & ARROWS

GRADING RESULTS

Carat Weight 0.47 CARAT
Color Grade D
Clarity Grade VVS 1
Cut Grade EXCELLENT

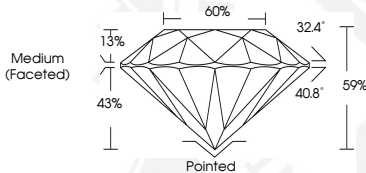


Sample Image Used

ADDITIONAL GRADING INFORMATION

Polish EXCELLENT
Symmetry EXCELLENT
Fluorescence NONE
Inscription(s) IGI LG645492541

Comments: HEARTS & ARROWS
 This Laboratory Grown Diamond was created by Chemical Vapor Deposition (CVD) growth process.
 Type Ila



July 29, 2024
IGI Report Number LG645492541
ROUND BRILLIANT
LABORATORY GROWN DIAMOND
5.08 - 5.10 X 3.00 MM
Carat Weight 0.47 CARAT
Color Grade D
Clarity Grade VVS 1
Cut Grade EXCELLENT
Polish EXCELLENT
Symmetry EXCELLENT
Fluorescence NONE
Inscription(s) IGI LG645492541
Comments: HEARTS & ARROWS This Laboratory Grown Diamond was created by Chemical Vapor Deposition (CVD) growth process.
 Type Ila

THIS DOCUMENT WAS PRODUCED WITH THE FOLLOWING SECURITY MEASURES: SPECIAL DOCUMENT PAPER, INK SCREENS, WATERMARK, BACKGROUND DESIGNS, HOLOGRAM AND OTHER SECURITY FEATURES NOT LISTED AND DO EXCEED DOCUMENT SECURITY INDUSTRY GUIDELINES.

For terms & conditions and to verify this report, please visit www.igi.org