



**INTERNATIONAL
GEMOLOGICAL
INSTITUTE**

ELECTRONIC COPY

LG645492563



July 29, 2024
IGI Report Number LG645492563
**CUT CORNERED RECTANGULAR
 MODIFIED BRILLIANT**
LABORATORY GROWN DIAMOND
6.58 X 4.75 X 3.19 MM
 Carat Weight **0.84 CARAT**
 Color Grade **D**
 Clarity Grade **VVS 2**
 Polish **EXCELLENT**
 Symmetry **EXCELLENT**
 Fluorescence **NONE**
 Inscription(s) **IGI LG645492563**
 Comments: This Laboratory Grown
 Diamond was created by
 Chemical Vapor Deposition (CVD)
 growth process. Type IIa

LABORATORY GROWN DIAMOND REPORT

July 29, 2024
 IGI Report Number **LG645492563**
 Description **LABORATORY GROWN DIAMOND**
 Shape and Cutting Style **CUT CORNERED RECTANGULAR MODIFIED
 BRILLIANT**
 Measurements **6.58 X 4.75 X 3.19 MM**

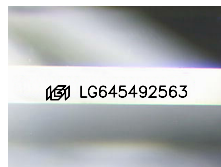
GRADING RESULTS

Carat Weight **0.84 CARAT**
 Color Grade **D**
 Clarity Grade **VVS 2**

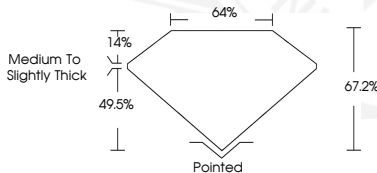
ADDITIONAL GRADING INFORMATION

Polish **EXCELLENT**
 Symmetry **EXCELLENT**
 Fluorescence **NONE**
 Inscription(s) **IGI LG645492563**

Comments: This Laboratory Grown Diamond was created by
 Chemical Vapor Deposition (CVD) growth process.
 Type IIa



Sample Image Used



July 29, 2024
IGI Report Number LG645492563
**CUT CORNERED RECTANGULAR
 MODIFIED BRILLIANT**
LABORATORY GROWN DIAMOND
6.58 X 4.75 X 3.19 MM
 Carat Weight **0.84 CARAT**
 Color Grade **D**
 Clarity Grade **VVS 2**
 Polish **EXCELLENT**
 Symmetry **EXCELLENT**
 Fluorescence **NONE**
 Inscription(s) **IGI LG645492563**
 Comments: This Laboratory Grown
 Diamond was created by
 Chemical Vapor Deposition (CVD)
 growth process. Type IIa

THIS DOCUMENT WAS PRODUCED WITH THE FOLLOWING SECURITY MEASURES: SPECIAL DOCUMENT PAPER, INK SCREENS, WATERMARK, BACKGROUND DESIGN, HOLOGRAM AND OTHER SECURITY FEATURES NOT LISTED AND DO EXCEED DOCUMENT SECURITY INDUSTRY GUIDELINES.

For terms & conditions and to verify this report, please visit www.igi.org