



ELECTRONIC COPY

LG645493005 Report verification at igi.org



July 29, 2024 IGI Report Number LG645493005 Description LABORATORY GROWN DIAMOND Shape and Cutting Style MARQUISE BRILLIANT Measurements 11.75 X 6.01 X 3.83 MM GRADING RESULTS Carat Weight 1.53 CARAT Color Grade F Clarity Grade VS 1

LABORATORY GROWN DIAMOND REPORT

July 29, 2024 IGI Report Number LG645493005 Description LABORATORY GROWN DIAMOND Shape and Cutting Style MARQUISE BRILLIANT Measurements 11.75 X 6.01 X 3.83 MM

GRADING RESULTS

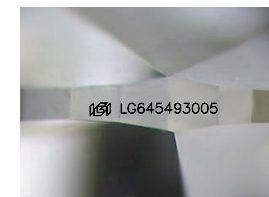
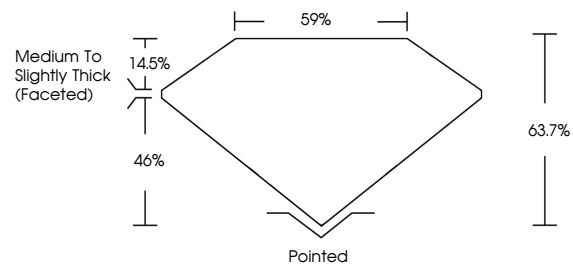
Carat Weight 1.53 CARAT Color Grade F Clarity Grade VS 1

ADDITIONAL GRADING INFORMATION

Polish EXCELLENT Symmetry EXCELLENT Fluorescence NONE Inscription(s) IGI LG645493005

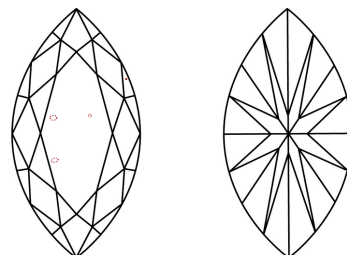
Comments: This Laboratory Grown Diamond was created by Chemical Vapor Deposition (CVD) growth process. Type IIa

PROPORTIONS



Sample Image Used

CLARITY CHARACTERISTICS



KEY TO SYMBOLS

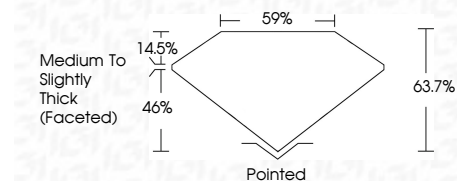
Red symbols indicate internal characteristics. Green symbols indicate external characteristics.

COLOR

D E F G H I J Faint Very Light Light

CLARITY

IF VS 1-2 VS 1-2 SI 1-2 I 1-3 Internally Flawless Very Very Slightly Included Very Slightly Included Slightly Included Included



ADDITIONAL GRADING INFORMATION

Polish EXCELLENT Symmetry EXCELLENT Fluorescence NONE Inscription(s) IGI LG645493005 Comments: This Laboratory Grown Diamond was created by Chemical Vapor Deposition (CVD) growth process. Type IIa



July 29, 2024 IGI Report No LG645493005 MARQUISE BRILLIANT 11.75 X 6.01 X 3.83 MM 1.53 CARAT F VS 1 63.7% 46% Medium to Slightly Thick (Faceted) Pointed EXCELLENT EXCELLENT NONE NONE IGI LG645493005 Comments: This Laboratory Grown Diamond was created by Chemical Vapor Deposition (CVD) growth process. Type IIa