



ELECTRONIC COPY

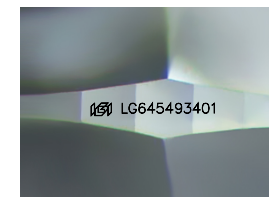
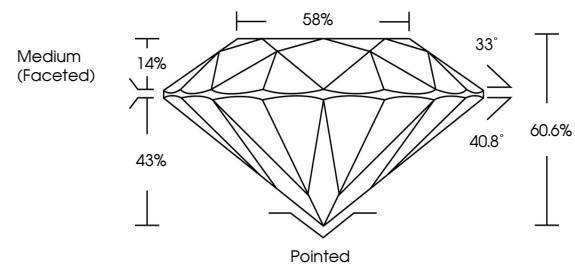
LG645493401
Report verification at igi.org



July 31, 2024
IGI Report Number LG645493401
Description LABORATORY GROWN DIAMOND
Shape and Cutting Style ROUND BRILLIANT
Measurements 7.44 - 7.47 X 4.51 MM
GRADING RESULTS
Carat Weight 1.53 CARAT
Color Grade E
Clarity Grade VS 1
Cut Grade IDEAL

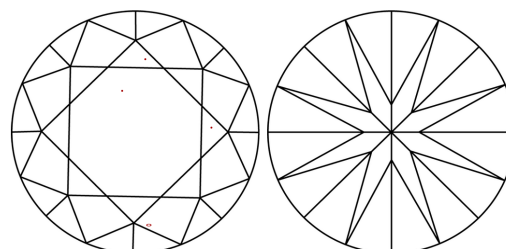
July 31, 2024
IGI Report Number LG645493401
Description LABORATORY GROWN DIAMOND
Shape and Cutting Style ROUND BRILLIANT
Measurements 7.44 - 7.47 X 4.51 MM

PROPORTIONS



Sample Image Used

CLARITY CHARACTERISTICS



KEY TO SYMBOLS

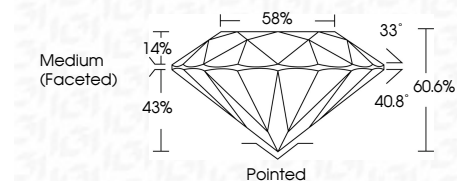
Red symbols indicate internal characteristics.
Green symbols indicate external characteristics.

COLOR

D E F G H I J Faint Very Light Light

CLARITY

IF VS 1-2 VS 1-2 SI 1-2 I 1-3
Internally Flawless Very Very Slightly Included Very Slightly Included Slightly Included Included



ADDITIONAL GRADING INFORMATION

Polish EXCELLENT
Symmetry EXCELLENT
Fluorescence NONE
Inscription(s) IGI LG645493401
Comments: This Laboratory Grown Diamond was created by Chemical Vapor Deposition (CVD) growth process. Type IIa

GRADING RESULTS
Carat Weight 1.53 CARAT
Color Grade E
Clarity Grade VS 1
Cut Grade IDEAL
ADDITIONAL GRADING INFORMATION
Polish EXCELLENT
Symmetry EXCELLENT
Fluorescence NONE
Inscription(s) IGI LG645493401

Comments: This Laboratory Grown Diamond was created by Chemical Vapor Deposition (CVD) growth process. Type IIa



July 31, 2024
IGI Report No LG645493401
ROUND BRILLIANT
7.44 - 7.47 X 4.51 MM
1.53 CARAT
E
VS 1
IDEAL
60.6%
58%
Medium (Faceted)
Pointed
EXCELLENT
EXCELLENT
NONE
IGI LG645493401
Comments: This Laboratory Grown Diamond was created by Chemical Vapor Deposition (CVD) growth process. Type IIa