



ELECTRONIC COPY

LG645493516
Report verification at igi.org



August 8, 2024
IGI Report Number **LG645493516**
Description **LABORATORY GROWN DIAMOND**
Shape and Cutting Style **CUT CORNERED
RECTANGULAR MODIFIED
BRILLIANT**
Measurements **7.20 X 5.14 X 3.74 MM**
GRADING RESULTS
Carat Weight **1.32 CARAT**
Color Grade **FANCY VIVID PINK**
Clarity Grade **VS 1**

August 8, 2024
IGI Report Number **LG645493516**
Description **LABORATORY GROWN DIAMOND**
Shape and Cutting Style **CUT CORNERED RECTANGULAR
MODIFIED BRILLIANT**
Measurements **7.20 X 5.14 X 3.74 MM**

GRADING RESULTS

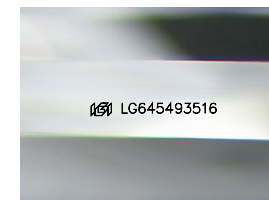
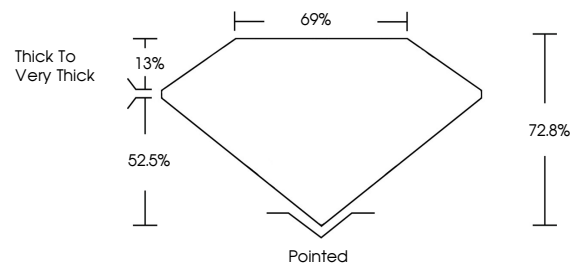
Carat Weight **1.32 CARAT**
Color Grade **FANCY VIVID PINK**
Clarity Grade **VS 1**

ADDITIONAL GRADING INFORMATION

Polish **VERY GOOD**
Symmetry **VERY GOOD**
Fluorescence **SLIGHT**
Inscription(s) **IGI LG645493516**

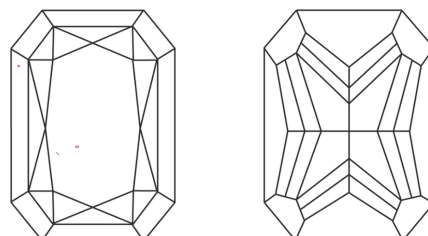
Comments: This Laboratory Grown Diamond was created by Chemical Vapor Deposition (CVD) growth process. Indications of post-growth treatment.

PROPORTIONS



Sample Image Used

CLARITY CHARACTERISTICS



KEY TO SYMBOLS

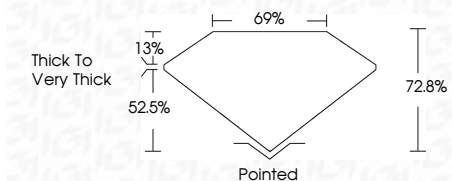
Red symbols indicate internal characteristics.
Green symbols indicate external characteristics.

COLOR

D E F G H I J Faint Very Light Light

CLARITY

IF	VS ¹⁻²	VS ¹⁻²	SI ¹⁻²	I ¹⁻³
Internally Flawless	Very Very Slightly Included	Very Slightly Included	Slightly Included	Included



ADDITIONAL GRADING INFORMATION

Polish **VERY GOOD**
Symmetry **VERY GOOD**
Fluorescence **SLIGHT**
Inscription(s) **IGI LG645493516**
Comments: This Laboratory Grown Diamond was created by Chemical Vapor Deposition (CVD) growth process. Indications of post-growth treatment.



IGI



August 8, 2024
IGI Report No **LG645493516**
CUT CORNERED RECT. MODIFIED BRILLIANT
7.20 X 5.14 X 3.74 MM
Carat Weight **1.32 CARAT**
Color Grade **FANCY VIVID PINK**
Clarity Grade **VS 1**
Depth **72.8%**
Table **69%**
Girdle **Thick to Very Thick**
Culet **Pointed**
Polish **VERY GOOD**
Symmetry **VERY GOOD**
Fluorescence **SLIGHT**
Inscription(s) **IGI LG645493516**
Comments: This Laboratory Grown Diamond was created by Chemical Vapor Deposition (CVD) growth process. Indications of post-growth treatment.