



ELECTRONIC COPY

LG645493537
Report verification at igi.org



August 7, 2024
IGI Report Number LG645493537
Description LABORATORY GROWN DIAMOND
Shape and Cutting Style EMERALD CUT
Measurements 7.76 X 5.44 X 3.63 MM
GRADING RESULTS
Carat Weight 1.50 CARAT
Color Grade FANCY INTENSE PINK
Clarity Grade VS 1

August 7, 2024
IGI Report Number LG645493537
Description LABORATORY GROWN DIAMOND
Shape and Cutting Style EMERALD CUT
Measurements 7.76 X 5.44 X 3.63 MM

GRADING RESULTS

Carat Weight 1.50 CARAT
Color Grade FANCY INTENSE PINK
Clarity Grade VS 1

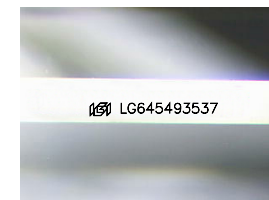
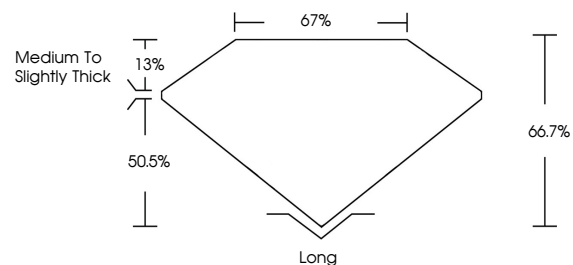
ADDITIONAL GRADING INFORMATION

Polish EXCELLENT
Symmetry EXCELLENT
Fluorescence SLIGHT
Inscription(s) IGI LG645493537

Comments: This Laboratory Grown Diamond was created by Chemical Vapor Deposition (CVD) growth process.
Indications of post-growth treatment.

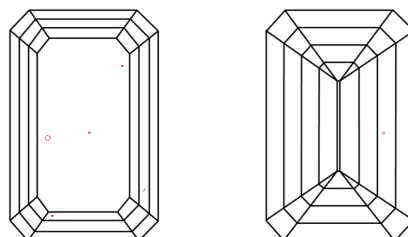
Secondary color: Brown

PROPORTIONS



Sample Image Used

CLARITY CHARACTERISTICS



KEY TO SYMBOLS

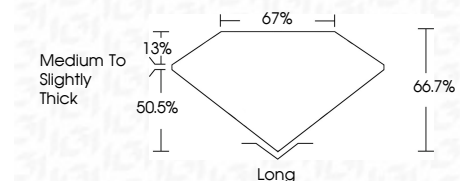
Red symbols indicate internal characteristics.
Green symbols indicate external characteristics.

COLOR

D E F G H I J Faint Very Light Light

CLARITY

Table with 5 columns: IF, VS 1-2, VS 1-2, SI 1-2, I 1-3. Rows: Internally Flawless, Very Very Slightly Included, Very Slightly Included, Slightly Included, Included.



ADDITIONAL GRADING INFORMATION

Polish EXCELLENT
Symmetry EXCELLENT
Fluorescence SLIGHT
Inscription(s) IGI LG645493537
Comments: This Laboratory Grown Diamond was created by Chemical Vapor Deposition (CVD) growth process.
Indications of post-growth treatment.
Secondary color: Brown



August 7, 2024
IGI Report No. LG645493537
EMERALD CUT
1.50 CARAT
FANCY INTENSE PINK
VS 1
66.7%
67%
Medium to Slightly Thick
Long
EXCELLENT
EXCELLENT
SLIGHT
IGI LG645493537
Comments: This Laboratory Grown Diamond was created by Chemical Vapor Deposition (CVD) growth process.
Indications of post-growth treatment.
Secondary color: Brown