



ELECTRONIC COPY

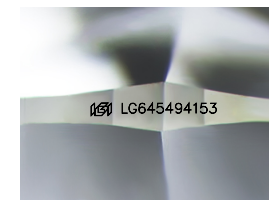
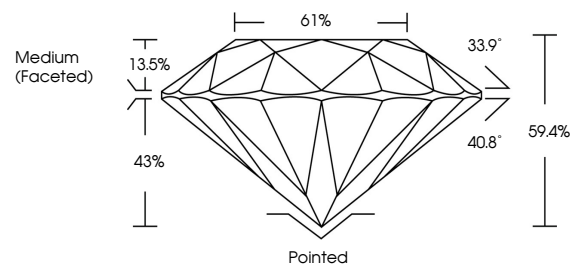
LG645494153
Report verification at igi.org



July 29, 2024
IGI Report Number: LG645494153
Description: LABORATORY GROWN DIAMOND
Shape and Cutting Style: ROUND BRILLIANT
Measurements: 7.59 - 7.57 X 4.50 MM
GRADING RESULTS
Carat Weight: 1.58 CARAT
Color Grade: D
Clarity Grade: VS 1
Cut Grade: EXCELLENT

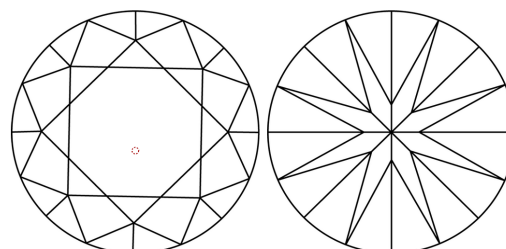
July 29, 2024
IGI Report Number: LG645494153
Description: LABORATORY GROWN DIAMOND
Shape and Cutting Style: ROUND BRILLIANT
Measurements: 7.59 - 7.57 X 4.50 MM

PROPORTIONS



Sample Image Used

CLARITY CHARACTERISTICS



KEY TO SYMBOLS

Red symbols indicate internal characteristics.
Green symbols indicate external characteristics.

GRADING RESULTS

Carat Weight: 1.58 CARAT
Color Grade: D
Clarity Grade: VS 1
Cut Grade: EXCELLENT

ADDITIONAL GRADING INFORMATION

Polish: EXCELLENT
Symmetry: EXCELLENT
Fluorescence: NONE
Inscription(s): IGI LG645494153

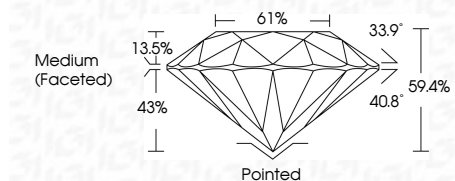
Comments: This Laboratory Grown Diamond was created by Chemical Vapor Deposition (CVD) growth process. Type IIa

COLOR

D E F G H I J Faint Very Light Light

CLARITY

IF VS 1-2 VS 1-2 SI 1-2 I 1-3
Internally Flawless Very Very Slightly Included Very Slightly Included Slightly Included Included



ADDITIONAL GRADING INFORMATION

Polish: EXCELLENT
Symmetry: EXCELLENT
Fluorescence: NONE
Inscription(s): IGI LG645494153
Comments: This Laboratory Grown Diamond was created by Chemical Vapor Deposition (CVD) growth process. Type IIa



July 29, 2024
IGI Report No. LG645494153
ROUND BRILLIANT
7.59 - 7.57 X 4.50 MM
1.58 CARAT
Color Grade: D
Clarity Grade: VS 1
Depth: 59.4%
Table: 61%
Medium (Faceted)
Cut: Pointed
Polish: EXCELLENT
Symmetry: EXCELLENT
Fluorescence: NONE
Inscriptions: IGI LG645494153
Comments: This Laboratory Grown Diamond was created by Chemical Vapor Deposition (CVD) growth process. Type IIa