



ELECTRONIC COPY

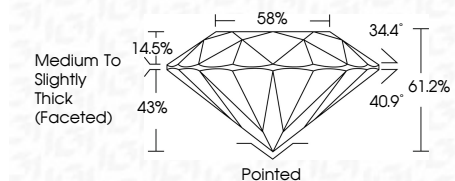
LG645496337
Report verification at igi.org



July 30, 2024
IGI Report Number LG645496337
Description LABORATORY GROWN DIAMOND
Shape and Cutting Style ROUND BRILLIANT
Measurements 7.31 - 7.30 X 4.47 MM

GRADING RESULTS

Carat Weight 1.47 CARAT
Color Grade E
Clarity Grade VS 1
Cut Grade IDEAL

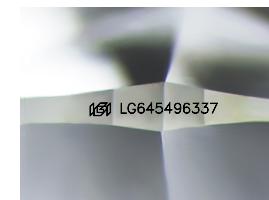


ADDITIONAL GRADING INFORMATION

Polish EXCELLENT
Symmetry EXCELLENT
Fluorescence NONE
Inscription(s) IGI LG645496337
Comments: This Laboratory Grown Diamond was created by Chemical Vapor Deposition (CVD) growth process. Type IIa

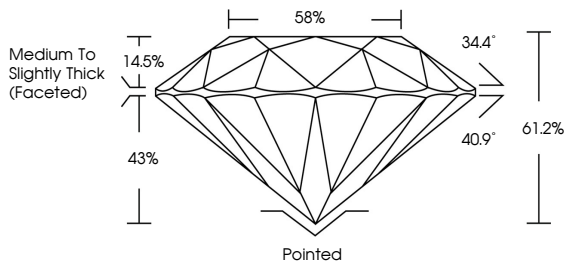


July 30, 2024
IGI Report No. LG645496337
ROUND BRILLIANT
1.47 CARAT E
7.31 - 7.30 X 4.47 MM
Color Grade VS 1
Clarity Grade IDEAL
Depth 61.2%
Table 58%
Medium To Slightly Thick (Faceted)
Cutler Pointed
Polish EXCELLENT
Symmetry EXCELLENT
Fluorescence NONE
Inscription(s) IGI LG645496337
Comments: This Laboratory Grown Diamond was created by Chemical Vapor Deposition (CVD) growth process. Type IIa

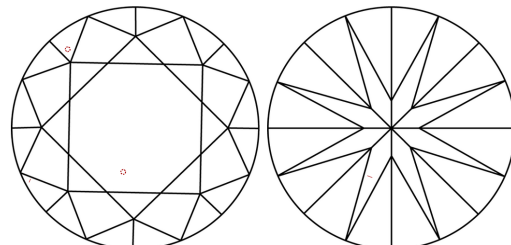


Sample Image Used

PROPORTIONS



CLARITY CHARACTERISTICS



KEY TO SYMBOLS

Red symbols indicate internal characteristics.
Green symbols indicate external characteristics.

COLOR

D E F G H I J Faint Very Light Light

CLARITY

IF VS 1-2 VS 1-2 SI 1-2 I 1-3
Internally Flawless Very Very Slightly Included Very Slightly Included Slightly Included Included

