



ELECTRONIC COPY

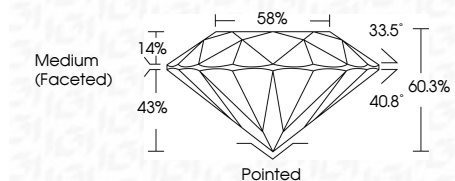
LG645496352
Report verification at igi.org



July 29, 2024
IGI Report Number LG645496352
Description LABORATORY GROWN DIAMOND
Shape and Cutting Style ROUND BRILLIANT
Measurements 8.17 - 8.19 X 4.94 MM

GRADING RESULTS

Carat Weight 2.03 CARATS
Color Grade F
Clarity Grade VS 2
Cut Grade IDEAL



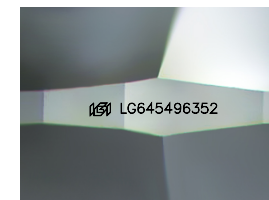
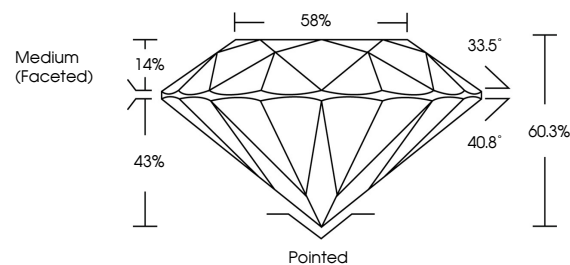
ADDITIONAL GRADING INFORMATION

Polish EXCELLENT
Symmetry EXCELLENT
Fluorescence NONE
Inscription(s) IGI LG645496352
Comments: This Laboratory Grown Diamond was created by Chemical Vapor Deposition (CVD) growth process. Type IIa



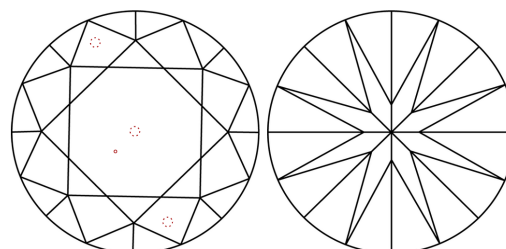
Table with 2 columns: Property and Value. Includes Carat Weight (2.03 CARATS), Color Grade (F), Clarity Grade (VS 2), Depth (60.3%), Table (58%), Girdle (Medium (Faceted)), and other grading details.

PROPORTIONS



Sample Image Used

CLARITY CHARACTERISTICS



KEY TO SYMBOLS

Red symbols indicate internal characteristics.
Green symbols indicate external characteristics.

COLOR

D E F G H I J Faint Very Light Light

CLARITY

IF VS 1-2 VS 1-2 SI 1-2 I 1-3
Internally Flawless Very Very Slightly Included Very Slightly Included Slightly Included Included



July 29, 2024
IGI Report No LG645496352

ROUND BRILLIANT

8.17 - 8.19 X 4.94 MM

Table with 2 columns: Property and Value. Includes Carat Weight (2.03 CARATS), Color Grade (F), Clarity Grade (VS 2), Depth (60.3%), Table (58%), Girdle (Medium (Faceted)), and other grading details.

Comments: This Laboratory Grown Diamond was created by Chemical Vapor Deposition (CVD) growth process. Type IIa