



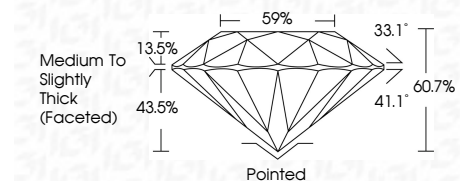
ELECTRONIC COPY

LG645498452
Report verification at igi.org



August 5, 2024
IGI Report Number LG645498452
Description LABORATORY GROWN DIAMOND
Shape and Cutting Style ROUND BRILLIANT
Measurements 9.60 - 9.67 X 5.86 MM

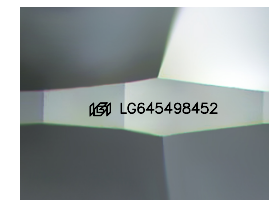
GRADING RESULTS
Carat Weight 3.34 CARATS
Color Grade F
Clarity Grade VS 2
Cut Grade IDEAL



ADDITIONAL GRADING INFORMATION
Polish EXCELLENT
Symmetry EXCELLENT
Fluorescence NONE
Inscription(s) IGI LG645498452
Comments: This Laboratory Grown Diamond was created by Chemical Vapor Deposition (CVD) growth process. Type IIa

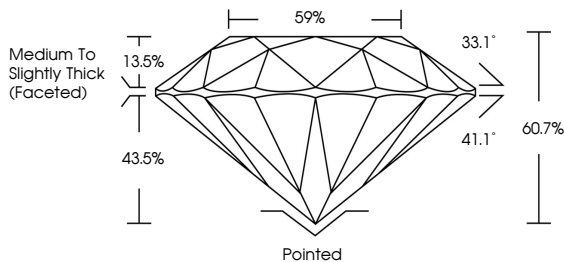


August 5, 2024
IGI Report No LG645498452
ROUND BRILLIANT
9.60 - 9.67 X 5.86 MM
3.34 CARATS
F
VS 2
IDEAL
60.7%
59%
Medium To Slightly Thick (Faceted)
Pointed
EXCELLENT
EXCELLENT
NONE
IGI LG645498452
Comments: This Laboratory Grown Diamond was created by Chemical Vapor Deposition (CVD) growth process. Type IIa

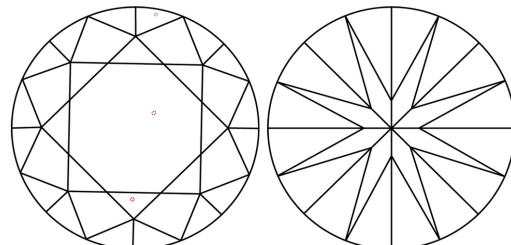


Sample Image Used

PROPORTIONS



CLARITY CHARACTERISTICS



KEY TO SYMBOLS
Red symbols indicate internal characteristics.
Green symbols indicate external characteristics.

Table with columns D, E, F, G, H, I, J, Faint, Very Light, Light

Table with columns IF, VS 1-2, VS 1-2, SI 1-2, I 1-3, Internally Flawless, Very Very Slightly Included, Very Slightly Included, Slightly Included, Included



August 5, 2024
IGI Report Number LG645498452
Description LABORATORY GROWN DIAMOND
Shape and Cutting Style ROUND BRILLIANT
Measurements 9.60 - 9.67 X 5.86 MM

GRADING RESULTS
Carat Weight 3.34 CARATS
Color Grade F
Clarity Grade VS 2
Cut Grade IDEAL

ADDITIONAL GRADING INFORMATION
Polish EXCELLENT
Symmetry EXCELLENT
Fluorescence NONE
Inscription(s) IGI LG645498452

Comments: This Laboratory Grown Diamond was created by Chemical Vapor Deposition (CVD) growth process. Type IIa