



ELECTRONIC COPY

LG646445120
Report verification at igi.org



August 3, 2024

IGI Report Number **LG646445120**

Description **LABORATORY GROWN DIAMOND**

Shape and Cutting Style **PRINCESS CUT**

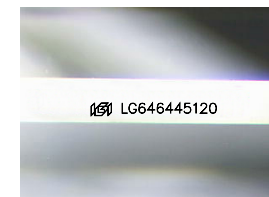
Measurements **5.64 X 5.60 X 3.98 MM**

GRADING RESULTS

Carat Weight **1.07 CARAT**

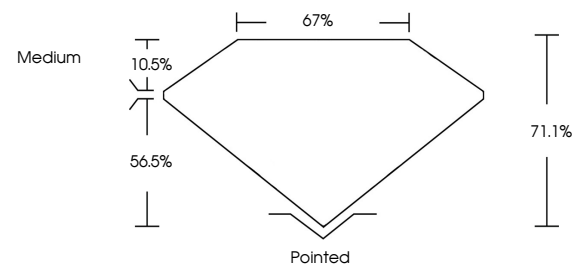
Color Grade **E**

Clarity Grade **VVS 2**

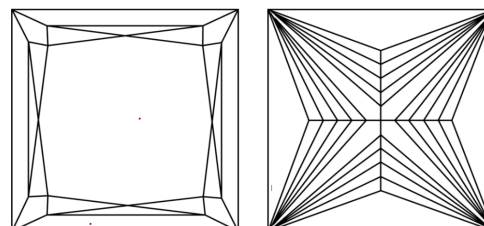


Sample Image Used

PROPORTIONS



CLARITY CHARACTERISTICS



KEY TO SYMBOLS

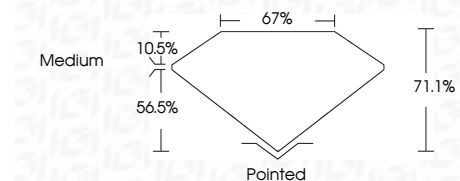
Red symbols indicate internal characteristics.
Green symbols indicate external characteristics.

COLOR

D E F G H I J Faint Very Light Light

CLARITY

IF	VS ¹⁻²	VS ¹⁻²	SI ¹⁻²	I ¹⁻³
Internally Flawless	Very Very Slightly Included	Very Slightly Included	Slightly Included	Included



ADDITIONAL GRADING INFORMATION

Polish **EXCELLENT**

Symmetry **EXCELLENT**

Fluorescence **NONE**

Inscription(s) **IGI LG646445120**

Comments: This Laboratory Grown Diamond was created by Chemical Vapor Deposition (CVD) growth process.
Type IIa



IGI



August 3, 2024	1.07 CARAT	E	VVS 2	71.1%	67%	Medium	Pointed
IGI Report No LG646445120	5.64 X 5.60 X 3.98 MM	Color Grade	Depth	Table	Girdle	Culet	Polish
PRINCESS CUT							EXCELLENT
							EXCELLENT
							NONE
							IGI LG646445120

Comments: This Laboratory Grown Diamond was created by Chemical Vapor Deposition (CVD) growth process.
Type IIa