



**ELECTRONIC COPY**

LG646447351  
Report verification at igi.org



August 2, 2024

IGI Report Number **LG646447351**

Description **LABORATORY GROWN DIAMOND**

Shape and Cutting Style **CUSHION BRILLIANT**

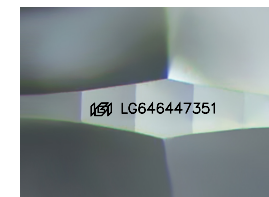
Measurements **8.98 X 6.44 X 4.49 MM**

**GRADING RESULTS**

Carat Weight **2.04 CARATS**

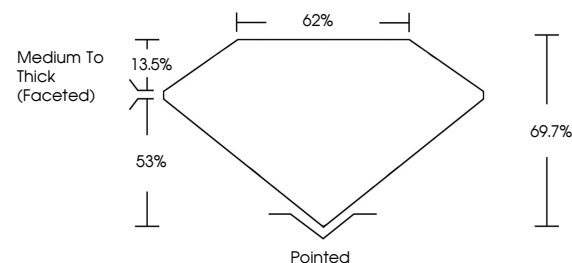
Color Grade **D**

Clarity Grade **SI 1**

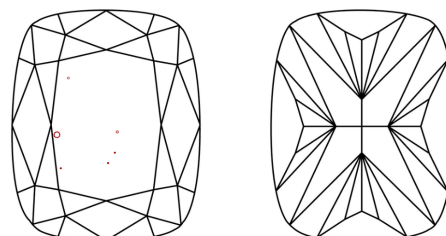


Sample Image Used

**PROPORTIONS**



**CLARITY CHARACTERISTICS**



**KEY TO SYMBOLS**

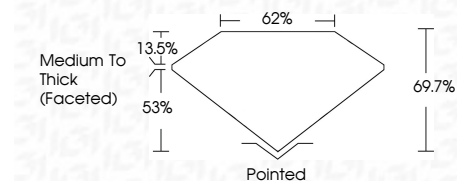
Red symbols indicate internal characteristics.  
Green symbols indicate external characteristics.

**COLOR**

D E F G H I J Faint Very Light Light

**CLARITY**

IF	VS <sup>1-2</sup>	VS <sup>1-2</sup>	SI <sup>1-2</sup>	I <sup>1-3</sup>
Internally Flawless	Very Very Slightly Included	Very Slightly Included	Slightly Included	Included



**ADDITIONAL GRADING INFORMATION**

Polish **EXCELLENT**

Symmetry **EXCELLENT**

Fluorescence **NONE**

Inscription(s) **IGI LG646447351**

Comments: This Laboratory Grown Diamond was created by Chemical Vapor Deposition (CVD) growth process.  
Type IIa



August 2, 2024  
IGI Report No LG646447351  
**CUSHION BRILLIANT**  
8.98 X 6.44 X 4.49 MM

Carat Weight	2.04 CARATS
Color Grade	D
Clarity Grade	SI 1
Depth	69.7%
Table	62%
Grailes	Medium To Thick (Faceted)
Culet	Pointed
Polish	EXCELLENT
Symmetry	EXCELLENT
Fluorescence	NONE
Inscription(s)	IGI LG646447351

Comments: This Laboratory Grown Diamond was created by Chemical Vapor Deposition (CVD) growth process.  
Type IIa