



ELECTRONIC COPY

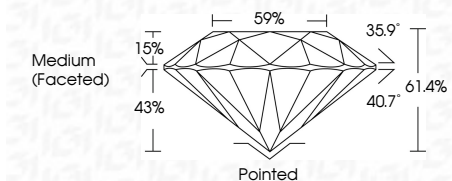
LG646449616
Report verification at igi.org



August 2, 2024
IGI Report Number LG646449616
Description LABORATORY GROWN DIAMOND
Shape and Cutting Style ROUND BRILLIANT
Measurements 8.10 - 8.13 X 4.98 MM

GRADING RESULTS

Carat Weight 2.04 CARATS
Color Grade E
Clarity Grade VS 1
Cut Grade IDEAL



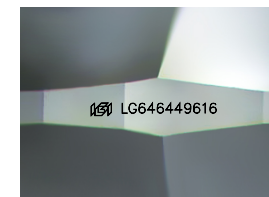
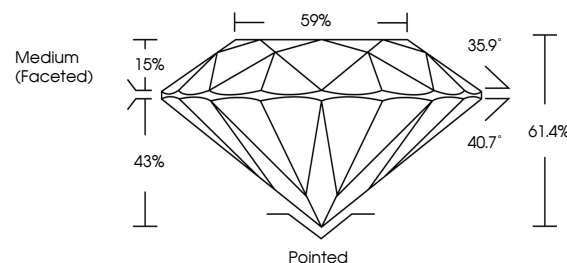
ADDITIONAL GRADING INFORMATION

Polish EXCELLENT
Symmetry EXCELLENT
Fluorescence NONE
Inscription(s) IGI LG646449616
Comments: This Laboratory Grown Diamond was created by Chemical Vapor Deposition (CVD) growth process. Type IIa



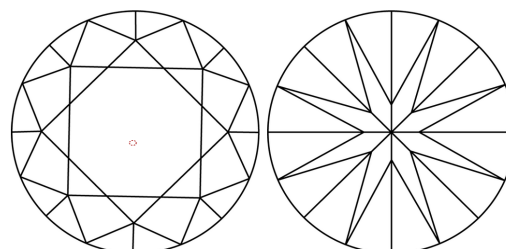
Table with 2 columns: Property and Value. Includes Carat Weight (2.04 CARATS), Color Grade (E), Clarity Grade (VS 1), Cut Grade (IDEAL), Depth (61.4%), Table (59%), Girdle (Medium (Faceted)), and other grading details.

PROPORTIONS



Sample Image Used

CLARITY CHARACTERISTICS



KEY TO SYMBOLS

Red symbols indicate internal characteristics.
Green symbols indicate external characteristics.

COLOR

D E F G H I J Faint Very Light Light

CLARITY

Table mapping clarity grades (IF, VVS 1-2, VS 1-2, SI 1-2, I 1-3) to their descriptions (Internally Flawless, Very Very Slightly Included, Very Slightly Included, Slightly Included, Included).



August 2, 2024
IGI Report No LG646449616

ROUND BRILLIANT

8.10 - 8.13 X 4.98 MM

2.04 CARATS
E
VS 1
IDEAL
61.4%
59%
Medium (Faceted)
Pointed
EXCELLENT
EXCELLENT
NONE
IGI LG646449616

Comments: This Laboratory Grown Diamond was created by Chemical Vapor Deposition (CVD) growth process. Type IIa