



ELECTRONIC COPY

LG646449875
Report verification at igi.org



August 1, 2024

IGI Report Number LG646449875

Description LABORATORY GROWN DIAMOND

Shape and Cutting Style CUT CORNERED RECTANGULAR MODIFIED BRILLIANT

Measurements 8.08 X 5.59 X 3.74 MM

GRADING RESULTS

Carat Weight 1.45 CARAT

Color Grade E

Clarity Grade VS 2

August 1, 2024

IGI Report Number LG646449875

Description LABORATORY GROWN DIAMOND

Shape and Cutting Style CUT CORNERED RECTANGULAR MODIFIED BRILLIANT

Measurements 8.08 X 5.59 X 3.74 MM

GRADING RESULTS

Carat Weight 1.45 CARAT

Color Grade E

Clarity Grade VS 2

ADDITIONAL GRADING INFORMATION

Polish EXCELLENT

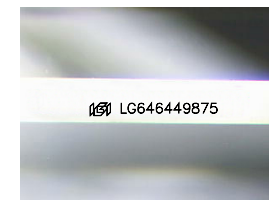
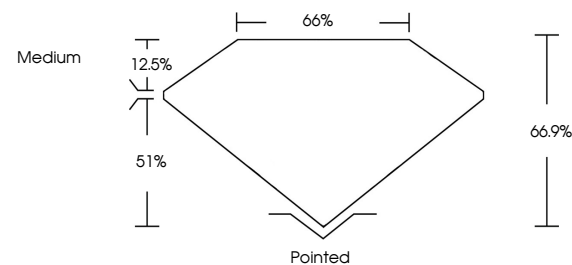
Symmetry EXCELLENT

Fluorescence NONE

Inscription(s) LG646449875

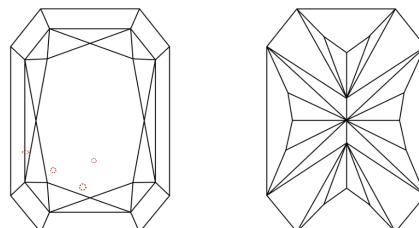
Comments: This Laboratory Grown Diamond was created by Chemical Vapor Deposition (CVD) growth process. Type IIa

PROPORTIONS



Sample Image Used

CLARITY CHARACTERISTICS



KEY TO SYMBOLS

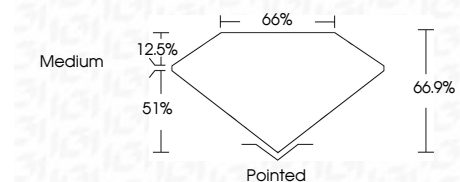
Red symbols indicate internal characteristics. Green symbols indicate external characteristics.

COLOR

D E F G H I J Faint Very Light Light

CLARITY

IF VS 1-2 VS 1-2 SI 1-2 I 1-3 Internally Flawless Very Very Slightly Included Very Slightly Included Slightly Included Included



ADDITIONAL GRADING INFORMATION

Polish EXCELLENT

Symmetry EXCELLENT

Fluorescence NONE

Inscription(s) LG646449875

Comments: This Laboratory Grown Diamond was created by Chemical Vapor Deposition (CVD) growth process. Type IIa



IGI



August 1, 2024
IGI Report No LG646449875
CUT CORNERED RECT. MODIFIED BRILLIANT
8.08 X 5.59 X 3.74 MM
1.45 CARAT
E
VS 2
66.9%
65%
Medium
Pointed
EXCELLENT
EXCELLENT
NONE
LG646449875
Comments: This Laboratory Grown Diamond was created by Chemical Vapor Deposition (CVD) growth process. Type IIa