



ELECTRONIC COPY

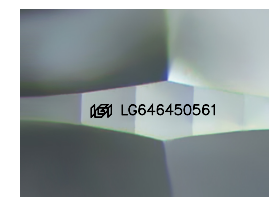
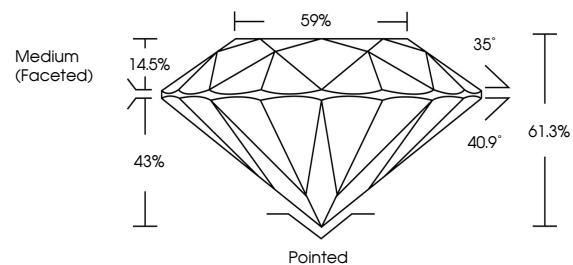
LG646450561 Report verification at igi.org



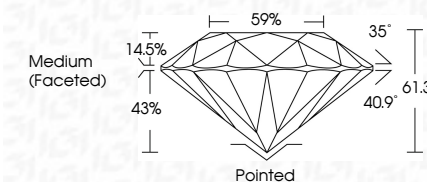
August 3, 2024
IGI Report Number LG646450561
Description LABORATORY GROWN DIAMOND
Shape and Cutting Style ROUND BRILLIANT
Measurements 8.12 - 8.17 X 4.99 MM
GRADING RESULTS
Carat Weight 2.04 CARATS
Color Grade F
Clarity Grade VVS 2
Cut Grade IDEAL

August 3, 2024
IGI Report Number LG646450561
Description LABORATORY GROWN DIAMOND
Shape and Cutting Style ROUND BRILLIANT
Measurements 8.12 - 8.17 X 4.99 MM
GRADING RESULTS
Carat Weight 2.04 CARATS
Color Grade F
Clarity Grade VVS 2
Cut Grade IDEAL

PROPORTIONS



Sample Image Used



ADDITIONAL GRADING INFORMATION
Polish EXCELLENT
Symmetry EXCELLENT
Fluorescence NONE
Inscription(s) IGI LG646450561

ADDITIONAL GRADING INFORMATION
Polish EXCELLENT
Symmetry EXCELLENT
Fluorescence NONE
Inscription(s) IGI LG646450561
Comments: This Laboratory Grown Diamond was created by Chemical Vapor Deposition (CVD) growth process. Type IIa

COLOR

D E F G H I J Faint Very Light Light

CLARITY

IF VVS 1-2 VS 1-2 SI 1-2 I 1-3
Internally Flawless Very Very Slightly Included Very Slightly Included Slightly Included Included



IGI

August 3, 2024
IGI Report No LG646450561
ROUND BRILLIANT
8.12 - 8.17 X 4.99 MM
2.04 CARATS
Color Grade F
Clarity Grade VVS 2
Depth 61.3%
Table 59%
Girdle Medium (Faceted)
Culet Pointed
Polish EXCELLENT
Symmetry EXCELLENT
Fluorescence NONE
Inscriptions(s) IGI LG646450561
Comments: This Laboratory Grown Diamond was created by Chemical Vapor Deposition (CVD) growth process. Type IIa