



ELECTRONIC COPY

LG646453497
Report verification at igi.org



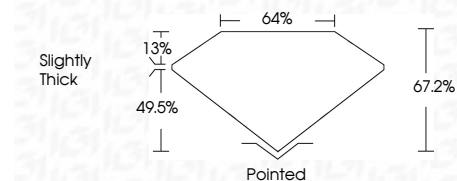
August 2, 2024
IGI Report Number **LG646453497**
Description **LABORATORY GROWN DIAMOND**

Shape and Cutting Style **CUT CORNERED
RECTANGULAR MODIFIED
BRILLIANT**

Measurements **12.97 X 8.60 X 5.78 MM**

GRADING RESULTS

Carat Weight **5.76 CARATS**
Color Grade **F**
Clarity Grade **VVS 2**
Cut Grade **EXCELLENT**



ADDITIONAL GRADING INFORMATION

Polish **EXCELLENT**
Symmetry **EXCELLENT**
Fluorescence **NONE**
Inscription(s) **IGI LG646453497**
Comments: This Laboratory Grown Diamond was created by Chemical Vapor Deposition (CVD) growth process. Type IIa



| | | | | | | | | | | | | | | | |
|----------------|---------------------------|---------------------------------------|------------------------|-------------|-------|--------|-----------|--------------|----------------|---|---------|-----------|-----------|------|-----------------|
| August 2, 2024 | IGI Report No LG646453497 | CUT CORNERED RECT. MODIFIED BRILLIANT | 12.97 X 8.60 X 5.78 MM | 5.76 CARATS | F | VVS 2 | EXCELLENT | 67.2% | 64% | Slightly Thick | Pointed | EXCELLENT | EXCELLENT | NONE | IGI LG646453497 |
| Color Grade | Clarity Grade | Depth | Table | Girdle | Culet | Polish | Symmetry | Fluorescence | Inscription(s) | Comments: This Laboratory Grown Diamond was created by Chemical Vapor Deposition (CVD) growth process. Type IIa | | | | | |

LABORATORY GROWN DIAMOND REPORT

August 2, 2024
IGI Report Number **LG646453497**
Description **LABORATORY GROWN DIAMOND**
Shape and Cutting Style **CUT CORNERED RECTANGULAR
MODIFIED BRILLIANT**
Measurements **12.97 X 8.60 X 5.78 MM**

GRADING RESULTS

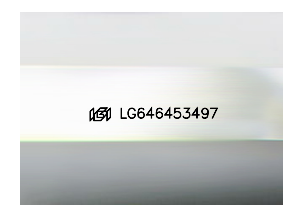
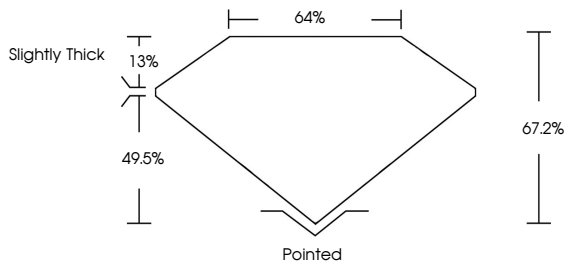
Carat Weight **5.76 CARATS**
Color Grade **F**
Clarity Grade **VVS 2**
Cut Grade **EXCELLENT**

ADDITIONAL GRADING INFORMATION

Polish **EXCELLENT**
Symmetry **EXCELLENT**
Fluorescence **NONE**
Inscription(s) **IGI LG646453497**

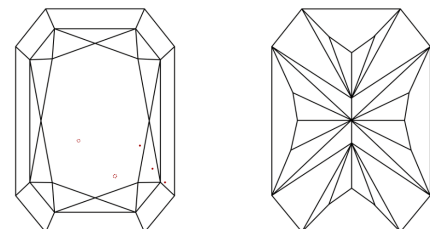
Comments: This Laboratory Grown Diamond was created by Chemical Vapor Deposition (CVD) growth process. Type IIa

PROPORTIONS



Sample Image Used

CLARITY CHARACTERISTICS



KEY TO SYMBOLS

Red symbols indicate internal characteristics.
Green symbols indicate external characteristics.

COLOR

| | | | | | | | | | |
|---|---|---|---|---|---|---|-------|------------|-------|
| D | E | F | G | H | I | J | Faint | Very Light | Light |
|---|---|---|---|---|---|---|-------|------------|-------|

CLARITY

| | | | | |
|---------------------|-----------------------------|------------------------|-------------------|------------------|
| IF | VS ¹⁻² | VS ¹⁻² | SI ¹⁻² | I ¹⁻³ |
| Internally Flawless | Very Very Slightly Included | Very Slightly Included | Slightly Included | Included |

