



**INTERNATIONAL
GEMOLOGICAL
INSTITUTE**

LABORATORY GROWN DIAMOND REPORT

August 6, 2024
 IGI Report Number **LG646453792**
 Description **LABORATORY GROWN DIAMOND**
 Shape and Cutting Style **ROUND BRILLIANT**
 Measurements **4.35 - 4.37 X 2.69 MM**

GRADING RESULTS

Carat Weight **0.30 CARAT**
 Color Grade **E**
 Clarity Grade **VVS 2**
 Cut Grade **GOOD**

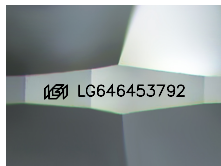
ADDITIONAL GRADING INFORMATION

Polish **VERY GOOD**
 Symmetry **VERY GOOD**
 Fluorescence **NONE**
 Inscription(s) **IGI LG646453792**

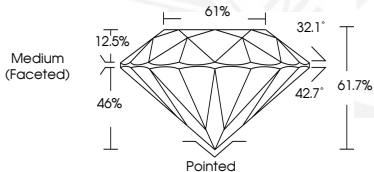
Comments: As Grown - No indication of post-growth treatment. This Laboratory Grown Diamond was created by High Pressure High Temperature (HPHT) growth process. Type II

ELECTRONIC COPY

LG646453792



Sample Image Used



August 6, 2024
 IGI Report Number **LG646453792**
ROUND BRILLIANT
LABORATORY GROWN DIAMOND
4.35 - 4.37 X 2.69 MM
 Carat Weight **0.30 CARAT**
 Color Grade **E**
 Clarity Grade **VVS 2**
 Cut Grade **GOOD**
 Polish **VERY GOOD**
 Symmetry **VERY GOOD**
 Fluorescence **NONE**
 Inscription(s) **IGI LG646453792**

Comments: As Grown - No indication of post-growth treatment. This Laboratory Grown Diamond was created by High Pressure High Temperature (HPHT) growth process. Type II



August 6, 2024
 IGI Report Number **LG646453792**
ROUND BRILLIANT
LABORATORY GROWN DIAMOND
4.35 - 4.37 X 2.69 MM
 Carat Weight **0.30 CARAT**
 Color Grade **E**
 Clarity Grade **VVS 2**
 Cut Grade **GOOD**
 Polish **VERY GOOD**
 Symmetry **VERY GOOD**
 Fluorescence **NONE**
 Inscription(s) **IGI LG646453792**

Comments: As Grown - No indication of post-growth treatment. This Laboratory Grown Diamond was created by High Pressure High Temperature (HPHT) growth process. Type II

THIS DOCUMENT WAS PRODUCED WITH THE FOLLOWING SECURITY MEASURES: SPECIAL DOCUMENT PAPER, INK SCREENS, WATERMARK, BACKGROUND DESIGN, HOLOGRAM AND OTHER SECURITY FEATURES NOT LISTED AND DO EXCEED DOCUMENT SECURITY INDUSTRY GUIDELINES.

For terms & conditions and to verify this report, please visit www.igi.org